

Intec-G2® Series



POWER & CONTROL



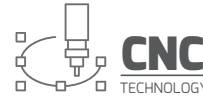
EXPERIENCE & QUALITY



TECHNOLOGY & INNOVATION



A GMM Group Company



Upgrade Option - Linear Scale Feedback

ACCURACY WITH LINEAR SCALE FEEDBACK*	± 0,05 mm - 0,002"
REPEATAB. WITH LINEAR SCALE FEEDBACK*	± 0,025 mm - 0,001"

TECHNICAL DATA

MODULE	i35-G2
MACHINE SIZE (L x W x H) Does not include pumps or control cabinet	1700 x 2600 x 2050 mm 67" x 102,3" x 80,7"
MACHINE WEIGHT	1600 kg - 3530 lb
MACHINE WEIGHT (with water)	5200 kg - 12500 lb
CUTTING TABLE DIMENSION	1060 x 1670 mm 41,7" x 65,7"
CUTTING AREA (without PAC60)	915 x 1525 mm 36" x 60"
BEVEL CUTTING AREA (with PAC60)	560 x 1170 mm 22" x 46"
CUTTING AREA MAXIMIZED (with PAC60)	735 x 1465 mm 28,9" x 57,6"
ACCURACY OF MOTION*	± 0,1 mm - 0,004"
REPEATABILITY OF MOTION*	± 0,025 mm - 0,001"
MAX. AIR SPEED	17,5 m/min - 700 in/min
MAX. CUTTING SPEED	17,5 m/min - 700 in/min
MAX. MATERIAL THICKNESS (with PAC60)	200 mm - 8" (115 mm - 4,5")

IMPORTANT NOTICE: the technical data is not binding and may be changed by Techni Waterjet without prior notice. All the above accuracy tolerances are correct at the calibration temperature of 20° ± 1° C.

*Linear/Axis/Meter

Machines displayed in the present catalogue are without safety barriers in order to ensure the perfect vision of all the details of the machine.

Intec-G2® 35

HIGH-PRESSURE WATERJET SYSTEMS

STANDARD FEATURES

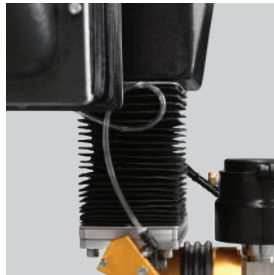
BREAK AWAY HEAD



Should the cutting head inadvertently crash into a clamp/fixture, hit the edge of a work piece or an upturned part, the Break Away Head will detect the crash and automatically stop the machine.

Not available with PAC60.

SERVO Z AXIS



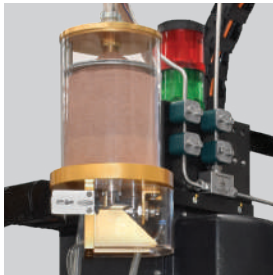
Servo Z axis with auto height position recall, laser terrain mapping (optional) and edge location optics.

WATER RAISE AND LOWER



Automatic water Raise/Lower at the push of a button for quieter, cleaner and safer submerged cutting; our tanks include air-tight welds of an air chamber which uses regular shop air pressure.

TECH-SENSE



Tech-Sense Monitoring System enables true unattended operations. Should the cutting be disrupted the machine will pause the program and send a text message to your cell phone (SMS Notification option must be fitted.)

ABRASIVE PUMP AND HOPPER



The hopper includes a clear pump chamber to ensure abrasive is present and flowing correctly. Here is where the abrasive is pressurized, allowing the lid to be opened at any time.

REMOTE CONTROL PENDANT



The MPG allows to manually wind forward or backward through a cutting path. This enables the operator to find the exact point along a cutting path from which to re-start cutting after a stoppage, or to simply locate a pre-cut part.

ELECTRIC SERVO PUMP - Patented

Quantum NXT™

The Quantum NXT™ pump incorporates core "direct servo" technology that was first applied by NASA for the Space Shuttle Program.



MAX OUTPUT PRESSURE 3585 bar (52,000 psi)
MAX OUTPUT VOLUME 1.9 l/min (0.5 gpm)
Output Volume Based on 480 VAC Electrical Supply

BENEFITS

- 60% more efficient than hydraulic intensifier
- Designed for quick seal service
- Virtually silent with noise level of 70 dbA



MAX OUTPUT PRESSURE 4550 bar (66,000 psi)
MAX OUTPUT VOLUME 3.8 l/min (1.0 gpm)
Output Volume Based on 480 VAC Electrical Supply

PAC60 - Patented

The PAC 60™ operating software incorporates the True Cut® algorithms data base, developed to determine the predicted taper at a given surface finish. This taper is then compensated for when cutting the part, anywhere from 0 to 60 degrees, giving you "Precision Angle Control" of any part that can be produced on an X-Y abrasive waterjet cutting machine.



- Cutting parts with a true angle up to +/- 60 degrees with continuous rotation.
- Patented Technology to reduce cutting time significantly.
- Complex 5-Axis Programming made easy and quick to learn.
- Surface Scanner to maintain constant distance between nozzle and workpiece when cutting uneven slabs.
- Positioning accuracy to ±0.1 degrees.
- Multi-pass cutting for edges with different angle.
- Taper cutting automatic compensation.

Intec-G2® Series



POWER & CONTROL



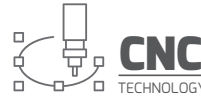
EXPERIENCE & QUALITY



TECHNOLOGY & INNOVATION



A GMM Group Company



Upgrade Option - Linear Scale Feedback

ACCURACY WITH LINEAR SCALE FEEDBACK*	± 0,05 mm - 0,002"
REPEATAB. WITH LINEAR SCALE FEEDBACK*	± 0,025 mm - 0,001"

TECHNICAL DATA

MODULE	i510-G2
MACHINE SIZE (L x W x H) Does not include pumps or control cabinet	4200 x 2350 x 2050 mm 165" x 92" x 80,7"
MACHINE WEIGHT	2010 kg - 4431 lb
MACHINE WEIGHT (with water)	6800 kg - 15000 lb
CUTTING TABLE DIMENSION	1550 x 3125 mm 61" x 123"
CUTTING AREA (without PAC60)	1525 x 3050 mm 60" x 120"
BEVEL CUTTING AREA (with PAC60)	1120 x 2700 mm 44" x 106"
CUTTING AREA MAXIMIZED (with PAC60)	1460 x 3005 mm 57,4" x 118"
ACCURACY OF MOTION*	± 0,12 mm - 0,005"
REPEATABILITY OF MOTION*	± 0,025 mm - 0,001"
MAX. AIR SPEED	17,5 m/min - 700 in/min
MAX. CUTTING SPEED	17,5 m/min - 700 in/min
MAX. MATERIAL THICKNESS (with PAC60)	200 mm - 8" (115 mm - 4,5")

IMPORTANT NOTICE: the technical data is not binding and may be changed by Techni Waterjet without prior notice. All the above accuracy tolerances are correct at the calibration temperature of 20° ± 1° C.

*Linear/Axis/Meter

Machines displayed in the present catalogue are without safety barriers in order to ensure the perfect vision of all the details of the machine.

Intec-G2® 510

HIGH-PRESSURE WATERJET SYSTEMS

STANDARD FEATURES

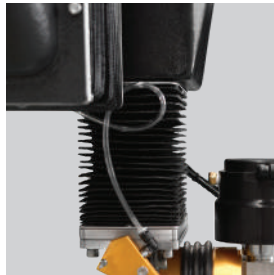
BREAK AWAY HEAD



When the cutting head inadvertently crashes into a clamp or fixture, or hits the edge of a work piece or an upturned part, the Break Away Head will detect the crash and automatically stop the machine.

Not available with PAC60.

SERVO Z AXIS



Programmable Z axis with auto height position recall, laser terrain mapping and edge location optics.

WATER RAISE AND LOWER



Automatic water Raise/Lower at the push of a button for Submerged Cutting; our tanks include air-tight welds of an air chamber which uses regular shop air pressure.

TECH-SENSE



Tech-Sense Monitoring System provides the ability to run a night shift without the need for an attending operator. Should the cutting be disrupted, e.g. blocked nozzle, the machine will pause the program and send a text message to your cell phone.

ABRASIVE PUMP AND HOPPER



Clear pump chamber to ensure abrasive is present and flowing correctly. Here is where the abrasive is pressurized, allowing the lid to be opened at any time.

REMOTE CONTROL PENDANT



The MPG allows to manually wind forward or backward through a cutting path. This enables the operator to find the exact point along a cutting path from which to re-start cutting after a stoppage, or to accurately locate a pre-cut part.

ELECTRIC SERVO PUMP - Patented

Quantum NXT™

The Quantum NXT™ pump incorporates core "direct servo" technology that was first applied by NASA for the Space Shuttle Program.



MAX OUTPUT PRESSURE 3585 bar (52,000 psi)
MAX OUTPUT VOLUME 1.9 l/min (0.5 gpm)
Output Volume Based on 480 VAC Electrical Supply

BENEFITS

- 60% more efficient than hydraulic intensifier
- Designed for quick seal service
- Virtually silent with noise level of 70 dbA



MAX OUTPUT PRESSURE 4550 bar (66,000 psi)
MAX OUTPUT VOLUME 3.8 l/min (1.0 gpm)
Output Volume Based on 480 VAC Electrical Supply

PAC60 - Patented

The PAC 60™ operating software incorporates the True Cut® algorithms data base, developed to determine the predicted taper at a given surface finish. This taper is then compensated for when cutting the part, anywhere from 0 to 60 degrees, giving you "Precision Angle Control" of any part that can be produced on an X-Y abrasive waterjet cutting machine.



- Cutting parts with a true angle up to +/- 60 degrees with continuous rotation.
- Patented Technology to reduce cutting time significantly.
- Complex 5-Axis Programming made easy and quick to learn.
- Surface Scanner to maintain constant distance between nozzle and workpiece when cutting uneven slabs.
- Positioning accuracy to ± 0.1 degrees.
- Multi-pass cutting for edges with different angle.
- Taper cutting automatic compensation.

Intec-G2® Series



POWER & CONTROL



EXPERIENCE & QUALITY



TECHNOLOGY & INNOVATION



A GMM Group Company



Upgrade Option - Linear Scale Feedback

ACCURACY WITH LINEAR SCALE FEEDBACK*	± 0,05 mm - 0,002"
REPEATAB. WITH LINEAR SCALE FEEDBACK*	± 0,025 mm - 0,001"

TECHNICAL DATA

MODULE	i612-G2
MACHINE SIZE (L x W x H) Does not include pumps or control cabinet	4900 x 2650 x 2050 mm 193" x 104,3" x 80,7"
MACHINE WEIGHT	2330 kg - 5140 lb
MACHINE WEIGHT (with water)	8700 kg - 19180 lb
CUTTING TABLE DIMENSION	1860 x 3690 mm 73,2" x 145,3"
CUTTING AREA (without PAC60)	1830 x 3660 mm 72" x 144"
BEVEL CUTTING AREA (with PAC60)	not available
CUTTING AREA MAXIMIZED (with PAC60)	not available
ACCURACY OF MOTION*	± 0,15 mm/m - 0,006"
REPEATABILITY OF MOTION*	± 0,05 mm - 0,002"
MAX. AIR SPEED	17,5 m/min - 700 in/min
MAX. CUTTING SPEED	17,5 m/min - 700 in/min
MAX. MATERIAL THICKNESS (with PAC60)	200 mm - 8" (not available)

IMPORTANT NOTICE: the technical data is not binding and may be changed by Techni Waterjet without prior notice. All the above accuracy tolerances are correct at the calibration temperature of 20° ± 1° C.

*Linear/Axis/Meter

Machines displayed in the present catalogue are without safety barriers in order to ensure the perfect vision of all the details of the machine.

Intec-G2® 612

HIGH-PRESSURE WATERJET SYSTEMS

STANDARD FEATURES

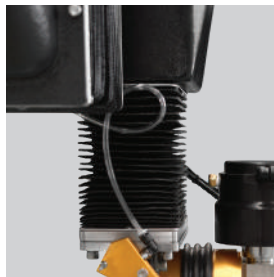
BREAK AWAY HEAD



When the cutting head inadvertently crashes into a clamp or fixture, or hits the edge of a work piece or an upturned part, the Break Away Head will detect the crash and automatically stop the machine.

Not available with PAC60.

SERVO Z AXIS



Programmable Z axis with auto height position recall, laser terrain mapping and edge location optics.

WATER RAISE AND LOWER



Automatic water Raise/Lower at the push of a button for Submerged Cutting; our tanks include air-tight welds of an air chamber which uses regular shop air pressure.

TECH-SENSE



Tech-Sense Monitoring System provides the ability to run a night shift without the need for an attending operator. Should the cutting be disrupted, e.g. blocked nozzle, the machine will pause the program and send a text message to your cell phone.

ABRASIVE PUMP AND HOPPER



Clear pump chamber to ensure abrasive is present and flowing correctly. Here is where the abrasive is pressurized, allowing the lid to be opened at any time.

REMOTE CONTROL PENDANT



The MPG allows to manually wind forward or backward through a cutting path. This enables the operator to find the exact point along a cutting path from which to re-start cutting after a stoppage, or to accurately locate a pre-cut part.

ELECTRIC SERVO PUMP - Patented

Quantum NXT™

The Quantum NXT™ pump incorporates core "direct servo" technology that was first applied by NASA for the Space Shuttle Program.



MAX OUTPUT PRESSURE 3585 bar (52,000 psi)
MAX OUTPUT VOLUME 1.9 l/min (0.5 gpm)
Output Volume Based on 480 VAC Electrical Supply

BENEFITS

- 60% more efficient than hydraulic intensifier
- Designed for quick seal service
- Virtually silent with noise level of 70 dbA



MAX OUTPUT PRESSURE 4550 bar (66,000 psi)
MAX OUTPUT VOLUME 3.8 l/min (1.0 gpm)
Output Volume Based on 480 VAC Electrical Supply

Intec-G2® Series



POWER & CONTROL



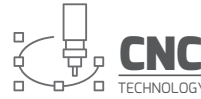
EXPERIENCE & QUALITY



TECHNOLOGY & INNOVATION



A GMM Group Company



Upgrade Option - Linear Scale Feedback

ACCURACY WITH LINEAR SCALE FEEDBACK* ± 0,05 mm - 0,002"
 REPEATAB. WITH LINEAR SCALE FEEDBACK* ± 0,025 mm - 0,001"

TECHNICAL DATA

MODULE	i613-G2
MACHINE SIZE (L x W x H) Does not include pumps or control cabinet	5200 x 2700 x 2300 mm 205" x 106" x 91"
MACHINE WEIGHT	3600 kg - 7950 lb
MACHINE WEIGHT (with water)	8100 kg - 17860 lb
CUTTING TABLE DIMENSION	1930 x 3870 mm 76" x 152,3"
CUTTING AREA (without PAC60)	1700 x 3700 mm 66,9" x 145,7"
BEVEL CUTTING AREA (with PAC60)	1700 x 3700 mm 66,9" x 145,7"
CUTTING AREA MAXIMIZED (with PAC60)	1700 x 3700 mm 66,9" x 145,7"
ACCURACY OF MOTION*	± 0,15 mm/m - 0,006"
REPEATABILITY OF MOTION*	± 0,05 mm - 0,002"
MAX. AIR SPEED	17,5 m/min - 700 in/min
MAX. CUTTING SPEED	17,5 m/min - 700 in/min
MAX. MATERIAL THICKNESS (with PAC60)	200 mm - 8" (130 mm - 5")

IMPORTANT NOTICE: the technical data is not binding and may be changed by Techni Waterjet without prior notice. All the above accuracy tolerances are correct at the calibration temperature of 20° ± 1° C.

*Linear/Axis/Meter

Machines displayed in the present catalogue are without safety barriers in order to ensure the perfect vision of all the details of the machine.

Intec-G2® 613

HIGH-PRESSURE WATERJET SYSTEMS

STANDARD FEATURES

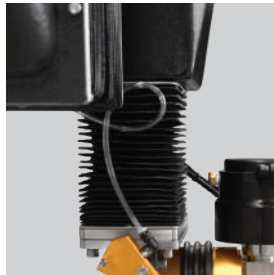
BREAK AWAY HEAD



When the cutting head inadvertently crashes into a clamp or fixture, or hits the edge of a work piece or an upturned part, the Break Away Head will detect the crash and automatically stop the machine.

Not available with PAC60.

SERVO Z AXIS



Programmable Z axis with auto height position recall, laser terrain mapping and edge location optics.

WATER RAISE AND LOWER



Automatic water Raise/Lower at the push of a button for Submerged Cutting; our tanks include air-tight welds of an air chamber which uses regular shop air pressure.

TECH-SENSE



Tech-Sense Monitoring System provides the ability to run a night shift without the need for an attending operator. Should the cutting be disrupted, e.g. blocked nozzle, the machine will pause the program and send a text message to your cell phone.

ABRASIVE PUMP AND HOPPER



Clear pump chamber to ensure abrasive is present and flowing correctly. Here is where the abrasive is pressurized, allowing the lid to be opened at any time.

REMOTE CONTROL PENDANT



The MPG allows to manually wind forward or backward through a cutting path. This enables the operator to find the exact point along a cutting path from which to re-start cutting after a stoppage, or to accurately locate a pre-cut part.

ELECTRIC SERVO PUMP - Patented

Quantum NXT™

The Quantum NXT™ pump incorporates core "direct servo" technology that was first applied by NASA for the Space Shuttle Program.



MAX OUTPUT PRESSURE 3585 bar (52,000 psi)
MAX OUTPUT VOLUME 1.9 l/min (0.5 gpm)
Output Volume Based on 480 VAC Electrical Supply

BENEFITS

- 60% more efficient than hydraulic intensifier
- Designed for quick seal service
- Virtually silent with noise level of 70 dbA



MAX OUTPUT PRESSURE 4550 bar (66,000 psi)
MAX OUTPUT VOLUME 3.8 l/min (1.0 gpm)
Output Volume Based on 480 VAC Electrical Supply

PAC60 - Patented



The PAC 60™ operating software incorporates the True Cut® algorithms data base, developed to determine the predicted taper at a given surface finish. This taper is then compensated for when cutting the part, anywhere from 0 to 60 degrees, giving you "Precision Angle Control" of any part that can be produced on an X-Y abrasive waterjet cutting machine.

- Cutting parts with a true angle up to +/- 60 degrees with continuous rotation.
- Patented Technology to reduce cutting time significantly.
- Complex 5-Axis Programming made easy and quick to learn.
- Surface Scanner to maintain constant distance between nozzle and workpiece when cutting uneven slabs.
- Positioning accuracy to ± 0.1 degrees.
- Multi-pass cutting for edges with different angle.
- Taper cutting automatic compensation.

Intec-G2® Series



POWER & CONTROL



EXPERIENCE & QUALITY



TECHNOLOGY & INNOVATION



A GMM Group Company



Upgrade Option - Linear Scale Feedback

ACCURACY WITH LINEAR SCALE FEEDBACK*	± 0,05 mm - 0,002"
REPEATAB. WITH LINEAR SCALE FEEDBACK*	± 0,025 mm - 0,001"

TECHNICAL DATA

MODULE	i713-G2
MACHINE SIZE (L x W x H) Does not include pumps or control cabinet	5800 x 3100 x 2100 mm 228" x 122" x 82,5"
MACHINE WEIGHT	4160 kg - 9180 lb
MACHINE WEIGHT (with water)	13600 kg - 30000 lb
CUTTING TABLE DIMENSION	2000 x 4000 mm 78,7" x 157,5"
CUTTING AREA (without PAC60)	2000 x 4000 mm 78,7" x 157,5"
BEVEL CUTTING AREA (with PAC60)	1600 x 3650 mm 63" x 143,7"
CUTTING AREA MAXIMIZED (with PAC60)	1900 x 4000 mm 74,8" x 157,4"
ACCURACY OF MOTION*	± 0,15 mm/m - 0,006"
REPEATABILITY OF MOTION*	± 0,05 mm - 0,002"
MAX. AIR SPEED	17,5 m/min - 700 in/min
MAX. CUTTING SPEED	17,5 m/min - 700 in/min
MAX. MATERIAL THICKNESS (with PAC60)	200 mm - 8" (200 mm - 8")

IMPORTANT NOTICE: the technical data is not binding and may be changed by Techni Waterjet without prior notice. All the above accuracy tolerances are correct at the calibration temperature of 20° ± 1° C.

*Linear/Axis/Meter

Machines displayed in the present catalogue are without safety barriers in order to ensure the perfect vision of all the details of the machine.

Intec-G2® 713

HIGH-PRESSURE WATERJET SYSTEMS

STANDARD FEATURES

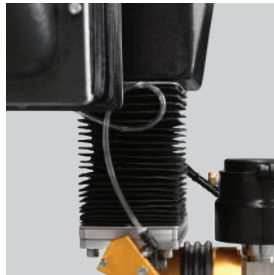
BREAK AWAY HEAD



When the cutting head inadvertently crashes into a clamp or fixture, or hits the edge of a work piece or an upturned part, the Break Away Head will detect the crash and automatically stop the machine.

Not available with PAC60.

SERVO Z AXIS



Programmable Z axis with auto height position recall, laser terrain mapping and edge location optics.

WATER RAISE AND LOWER



Automatic water Raise/Lower at the push of a button for Submerged Cutting; our tanks include air-tight welds of an air chamber which uses regular shop air pressure.

TECH-SENSE



Tech-Sense Monitoring System provides the ability to run a night shift without the need for an attending operator. Should the cutting be disrupted, e.g. blocked nozzle, the machine will pause the program and send a text message to your cell phone.

ABRASIVE PUMP AND HOPPER



Clear pump chamber to ensure abrasive is present and flowing correctly. Here is where the abrasive is pressurized, allowing the lid to be opened at any time.

REMOTE CONTROL PENDANT



The MPG allows to manually wind forward or backward through a cutting path. This enables the operator to find the exact point along a cutting path from which to re-start cutting after a stoppage, or to accurately locate a pre-cut part.

ELECTRIC SERVO PUMP - Patented

Quantum NXT™

The Quantum NXT™ pump incorporates core "direct servo" technology that was first applied by NASA for the Space Shuttle Program.



MAX OUTPUT PRESSURE 3585 bar (52,000 psi)
MAX OUTPUT VOLUME 1.9 l/min (0.5 gpm)
Output Volume Based on 480 VAC Electrical Supply

BENEFITS

- 60% more efficient than hydraulic intensifier
- Designed for quick seal service
- Virtually silent with noise level of 70 dbA



MAX OUTPUT PRESSURE 4550 bar (66,000 psi)
MAX OUTPUT VOLUME 3.8 l/min (1.0 gpm)
Output Volume Based on 480 VAC Electrical Supply



PAC60 - Patented

The PAC 60™ operating software incorporates the True Cut® algorithms data base, developed to determine the predicted taper at a given surface finish. This taper is then compensated for when cutting the part, anywhere from 0 to 60 degrees, giving you "Precision Angle Control" of any part that can be produced on an X-Y abrasive waterjet cutting machine.

- Cutting parts with a true angle up to +/- 60 degrees with continuous rotation.
- Patented Technology to reduce cutting time significantly.
- Complex 5-Axis Programming made easy and quick to learn.
- Surface Scanner to maintain constant distance between nozzle and workpiece when cutting uneven slabs.
- Positioning accuracy to ± 0.1 degrees.
- Multi-pass cutting for edges with different angle.
- Taper cutting automatic compensation.

Intec-G2® Series



POWER & CONTROL



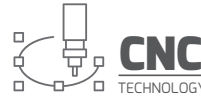
EXPERIENCE & QUALITY



TECHNOLOGY & INNOVATION



A GMM Group Company



Upgrade Option - Linear Scale Feedback

ACCURACY WITH LINEAR SCALE FEEDBACK*	± 0,05 mm - 0,002"
REPEATAB. WITH LINEAR SCALE FEEDBACK*	± 0,025 mm - 0,001"

TECHNICAL DATA

MODULE	i1020-G2
MACHINE SIZE (L x W x H) Does not include pumps or control cabinet	8000 x 4200 x 2000 mm 315" x 165,3" x 78,7"
MACHINE WEIGHT	7170 kg - 15800 lb
MACHINE WEIGHT (with water)	21920 kg - 48330 lb
CUTTING TABLE DIMENSION	3200 x 6250 mm 126" x 246"
CUTTING AREA (without PAC60)	3050 x 6100 mm 120" x 240"
BEVEL CUTTING AREA (with PAC60)	2730 x 5800 mm 107,5" x 228,3"
CUTTING AREA MAXIMIZED (with PAC60)	3030 x 6100 mm 119,2" x 240"
ACCURACY OF MOTION*	± 0,15 mm/m - 0,006"
REPEATABILITY OF MOTION*	± 0,05 mm - 0,002"
MAX. AIR SPEED	17,5 m/min - 700 in/min
MAX. CUTTING SPEED	17,5 m/min - 700 in/min
MAX. MATERIAL THICKNESS (with PAC60)	200 mm - 8" (200 mm - 8")

IMPORTANT NOTICE: the technical data is not binding and may be changed by Techni Waterjet without prior notice. All the above accuracy tolerances are correct at the calibration temperature of 20° ± 1° C.

*Linear/Axis/Meter

Machines displayed in the present catalogue are without safety barriers in order to ensure the perfect vision of all the details of the machine.

Intec-G2® 1020

HIGH-PRESSURE WATERJET SYSTEMS

STANDARD FEATURES

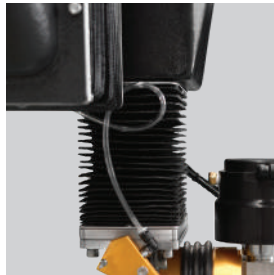
BREAK AWAY HEAD



When the cutting head inadvertently crashes into a clamp or fixture, or hits the edge of a work piece or an upturned part, the Break Away Head will detect the crash and automatically stop the machine.

Not available with PAC60.

SERVO Z AXIS



Programmable Z axis with auto height position recall, laser terrain mapping and edge location optics.

WATER RAISE AND LOWER



Automatic water Raise/Lower at the push of a button for Submerged Cutting; our tanks include air-tight welds of an air chamber which uses regular shop air pressure.

TECH-SENSE



Tech-Sense Monitoring System provides the ability to run a night shift without the need for an attending operator. Should the cutting be disrupted, e.g. blocked nozzle, the machine will pause the program and send a text message to your cell phone.

ABRASIVE PUMP AND HOPPER



Clear pump chamber to ensure abrasive is present and flowing correctly. Here is where the abrasive is pressurized, allowing the lid to be opened at any time.

REMOTE CONTROL PENDANT



The MPG allows to manually wind forward or backward through a cutting path. This enables the operator to find the exact point along a cutting path from which to re-start cutting after a stoppage, or to accurately locate a pre-cut part.

ELECTRIC SERVO PUMP - Patented

Quantum NXT™

The Quantum NXT™ pump incorporates core "direct servo" technology that was first applied by NASA for the Space Shuttle Program.



MAX OUTPUT PRESSURE 3585 bar (52,000 psi)
MAX OUTPUT VOLUME 1.9 l/min (0.5 gpm)
Output Volume Based on 480 VAC Electrical Supply

BENEFITS

- 60% more efficient than hydraulic intensifier
- Designed for quick seal service
- Virtually silent with noise level of 70 dbA



MAX OUTPUT PRESSURE 4550 bar (66,000 psi)
MAX OUTPUT VOLUME 3.8 l/min (1.0 gpm)
Output Volume Based on 480 VAC Electrical Supply

PAC60 - Patented

The PAC 60™ operating software incorporates the True Cut® algorithms data base, developed to determine the predicted taper at a given surface finish. This taper is then compensated for when cutting the part, anywhere from 0 to 60 degrees, giving you "Precision Angle Control" of any part that can be produced on an X-Y abrasive waterjet cutting machine.



- Cutting parts with a true angle up to +/- 60 degrees with continuous rotation.
- Patented Technology to reduce cutting time significantly.
- Complex 5-Axis Programming made easy and quick to learn.
- Surface Scanner to maintain constant distance between nozzle and workpiece when cutting uneven slabs.
- Positioning accuracy to ± 0.1 degrees.
- Multi-pass cutting for edges with different angle.
- Taper cutting automatic compensation.

Intec-G2® Series



POWER & CONTROL



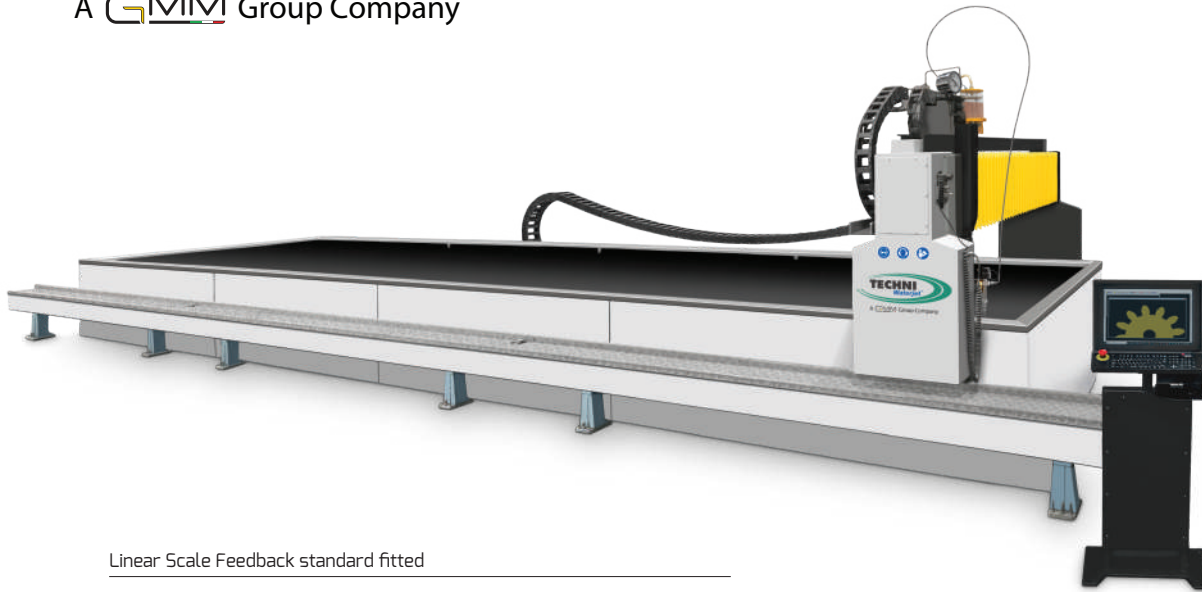
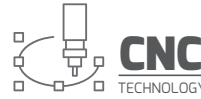
EXPERIENCE & QUALITY



TECHNOLOGY & INNOVATION



A GMM Group Company



Linear Scale Feedback standard fitted

ACCURACY WITH LINEAR SCALE FEEDBACK*	± 0,1 mm - 0,004"
REPEATAB. WITH LINEAR SCALE FEEDBACK*	± 0,05 mm - 0,002"

TECHNICAL DATA

MODULE	i1033XL-G2
MACHINE SIZE (L x W x H) Does not include pumps or control cabinet	12800 x 5400 x 2200 mm 503,9" x 212,6" x 86,6"
MACHINE WEIGHT	10800 kg - 23800 lb
MACHINE WEIGHT (with water)	38800 kg - 85540 lb
CUTTING TABLE DIMENSION	10150 x 3270 mm 393,6" x 128,7"
CUTTING AREA (without PAC60)	10000 x 3000 mm 393,7" x 118,1"
BEVEL CUTTING AREA (with PAC60)	10000 x 3000 mm 393,7" x 118,1"
CUTTING AREA MAXIMIZED (with PAC60)	10000 x 3000 mm 393,7" x 118,1"
ACCURACY OF MOTION*	± 0,1 mm - 0,004"
REPEATABILITY OF MOTION*	± 0,05 mm - 0,002"
MAX. AIR SPEED	17,5 m/min - 700 in/min
MAX. CUTTING SPEED	17,5 m/min - 700 in/min
MAX. MATERIAL THICKNESS (with PAC60)	200 mm - 8" (175 mm - 7")

IMPORTANT NOTICE: the technical data is not binding and may be changed by Techni Waterjet without prior notice. All the above accuracy tolerances are correct at the calibration temperature of 20° ± 1° C.

*Linear/Axis/Meter

Machines displayed in the present catalogue are without safety barriers in order to ensure the perfect vision of all the details of the machine.

Intec-G2® 1033XL

HIGH-PRESSURE WATERJET SYSTEMS

STANDARD FEATURES

BREAK AWAY HEAD



Should the cutting head inadvertently crash into a clamp/fixture, hit the edge of a work piece or an upturned part, the Break Away Head will detect the crash and automatically stop the machine.

Not available with PAC60.

SERVO Z AXIS



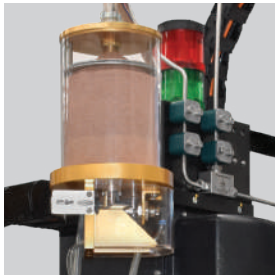
Servo Z axis with auto height position recall, laser terrain mapping (optional) and edge location optics.

HIGH-PRESSURE GAUGE



The HP gauge displays the pressure on the high-pressure water line. This allows the operator to see the actual pressure supplied to the cutting head and assists in troubleshooting.

TECH-SENSE



Tech-Sense Monitoring System enables true unattended operations. Should the cutting be disrupted the machine will pause the program and send a text message to your cell phone (SMS Notification option must be fitted.)

ABRASIVE PUMP AND HOPPER



The hopper includes a clear pump chamber to ensure abrasive is present and flowing correctly. Here is where the abrasive is pressurized, allowing the lid to be opened at any time.

REMOTE CONTROL PENDANT



The MPG allows to manually wind forward or backward through a cutting path. This enables the operator to find the exact point along a cutting path from which to re-start cutting after a stoppage, or to simply locate a pre-cut part.

ELECTRIC SERVO PUMP - Patented

Quantum NXT™

The Quantum NXT™ pump incorporates core "direct servo" technology that was first applied by NASA for the Space Shuttle Program.



ESP 37/66

MAX OUTPUT PRESSURE 4550 bar (66,000 psi)
MAX OUTPUT VOLUME 3.8 l/min (1.0 gpm)
Output Volume Based on 480 VAC Electrical Supply

BENEFITS

- 60% more efficient than hydraulic intensifier
- Designed for quick seal service
- Virtually silent with noise level of 70 dbA



ESP 74/66-D

MAX OUTPUT PRESSURE 4550 bar (66,000 psi)
MAX OUTPUT VOLUME 7.6 l/min (2.0 gpm)
Output Volume Based on 480 VAC Electrical Supply

TECH-SENSE



Tech-Sense Monitoring System enables true unattended operations. Should the cutting be disrupted the machine will pause the program and send a text message to your cell phone (SMS Notification option must be fitted.)

ABRASIVE PUMP AND HOPPER



The hopper includes a clear pump chamber to ensure abrasive is present and flowing correctly. Here is where the abrasive is pressurized, allowing the lid to be opened at any time.

REMOTE CONTROL PENDANT



The MPG allows to manually wind forward or backward through a cutting path. This enables the operator to find the exact point along a cutting path from which to re-start cutting after a stoppage, or to simply locate a pre-cut part.

PAC60 - Patented



The PAC 60™ operating software incorporates the True Cut® algorithms data base, developed to determine the predicted taper at a given surface finish. This taper is then compensated for when cutting the part, anywhere from 0 to 60 degrees, giving you "Precision Angle Control" of any part that can be produced on an X-Y abrasive waterjet cutting machine.

- Cutting parts with a true angle up to +/- 60 degrees with continuous rotation.
- Patented Technology to reduce cutting time significantly.
- Complex 5-Axis Programming made easy and quick to learn.
- Surface Scanner to maintain constant distance between nozzle and workpiece when cutting uneven slabs.
- Positioning accuracy to ±0.1 degrees.
- Multi-pass cutting for edges with different angle.
- Taper cutting automatic compensation.