

HEM[®] SAW Hurricane 2030A-CTS

— The saw that cuts straight. —

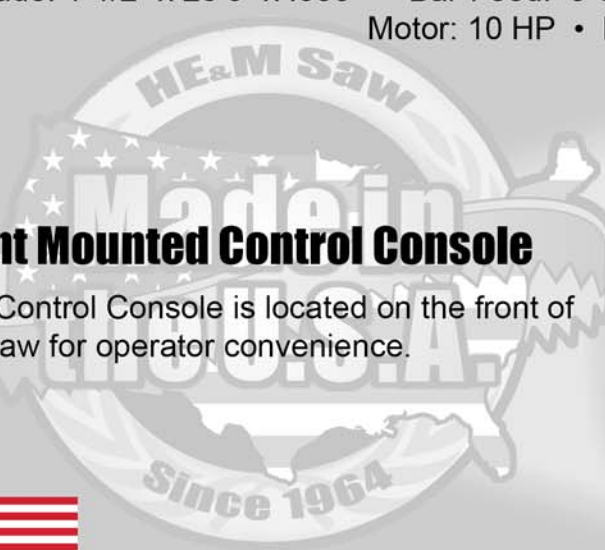


Horizontal Miter, Metal-Cutting Production Band Saw

Capacity: 20" h x 30" w @ 90° • 20" h x 20" w @ 45° L • 20" h x 13" w @ 60° L
Blade: 1-1/2" x 20'6" x .050" • Bar-Feed: 0-34" Stroke Hydraulic Cylinder (Multiple Index)
Motor: 10 HP • Hydraulics: 5 HP

Front Mounted Control Console

The Control Console is located on the front of the saw for operator convenience.



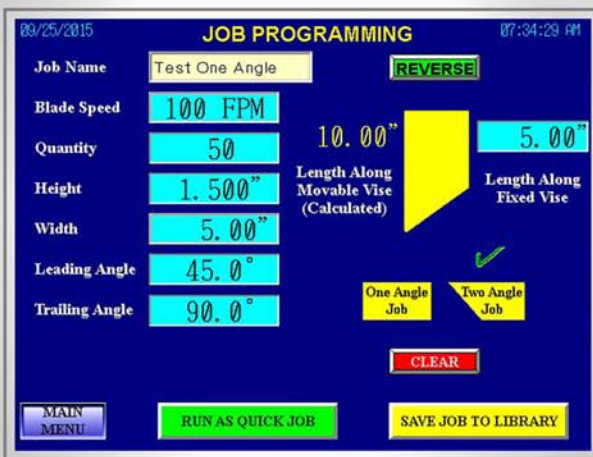
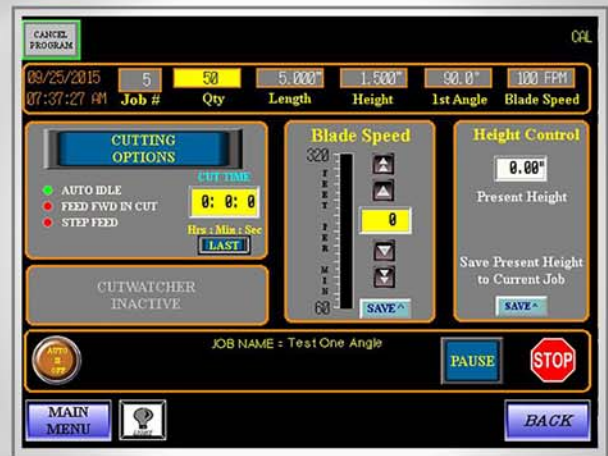


Touch Screen Controls

The Touch Screen display provides easy-to-use menu navigation for programming and recalling automatic saved jobs, running a series of jobs, as well as manual functions and programming information required for each job. Other functions include memory storage for a job library, system information, diagnostics and saw operation parameters.

Auto Run

The Auto Run screen controls the Computer Controlled Feed system which makes programming and running a job in automatic easy. Any pre-saved job can be entered into the Auto Run, or the operator can program a job. The quantity, length, angle, height, width, and blade speed are then entered and transferred to the Auto Run. The information can then be saved as a job, and can be operated on the saw at any time.

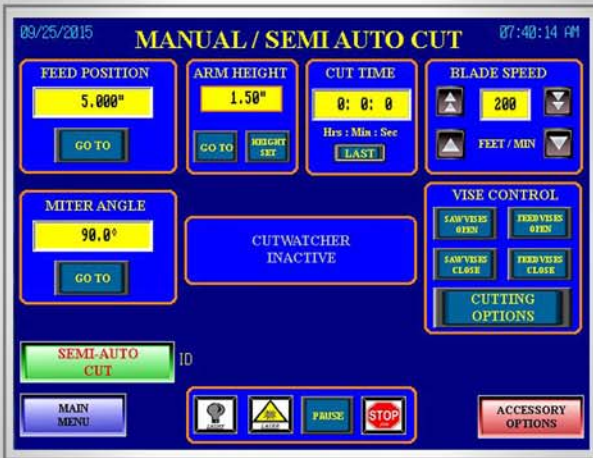


Program a Job

Jobs can be programmed into the touch screen then saved with a job number to run at any time. Up to 999 jobs can be saved. The part length, height, width, and quantity are entered for the cut, and then transferred to run automatically. Blade speed, blade type, and cutting options are also set before transferring to run automatically.

Program a Series

A series of cuts for certain parts can be programmed, to be cut from the same bar stock, by entering up to 12 jobs that will be run in a sequence. The sequence can be run up to 99 times by placing an amount into the "Reps" section. Up to 100 program series can be created and saved in the menu.

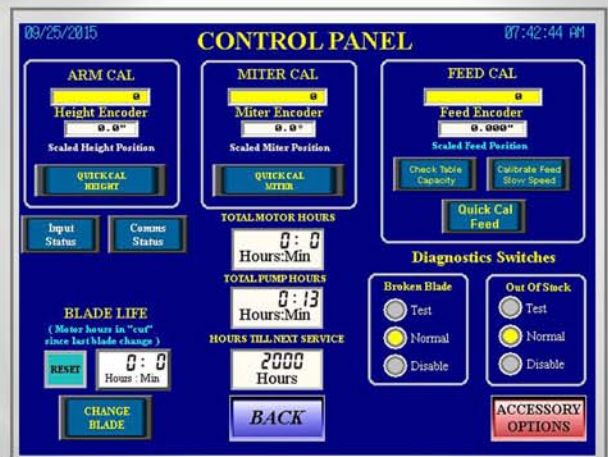


Manual / Semi-Auto Run

In Manual / Semi-Auto Run mode, the saw operator can make a single, semi-automatic cut without creating a program. The blade and various options can be controlled from this screen, or the console.

Control Panel

The control panel allows for quick I.O. and system operation to calibrate the encoders and help diagnose a possible problem with operation of the saw.



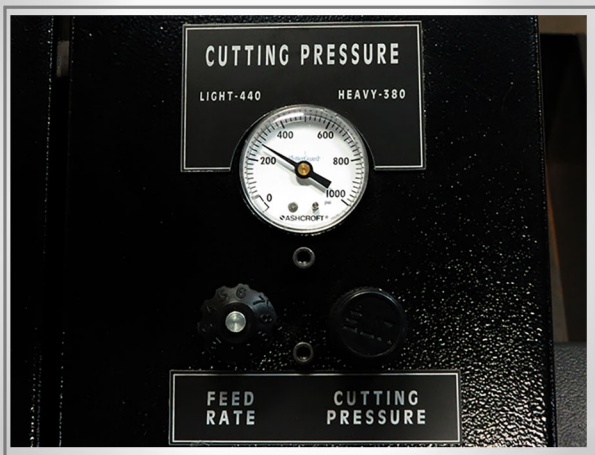
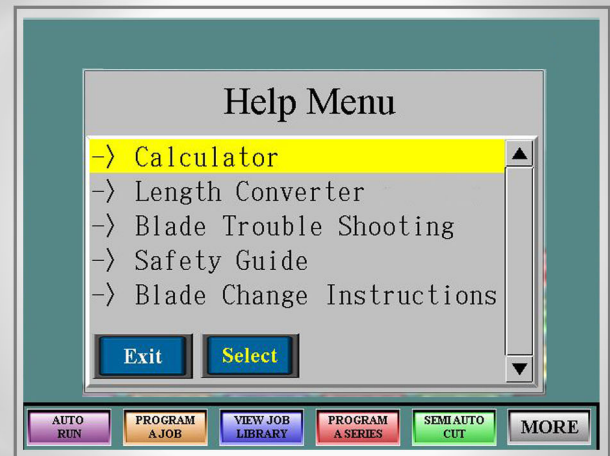


Cut Watcher[®] System

The patented Cut Watcher[®] system monitors the cut for squareness to a pre-set deviation value. The system shuts down the saw when the pre-set value is exceeded. This is a must for production cutting.

Help Files

Help files are available to assist in operating the saw. These include: a blade symptom chart, length converter, basic calculator, saw safety section, and blade change instructions.



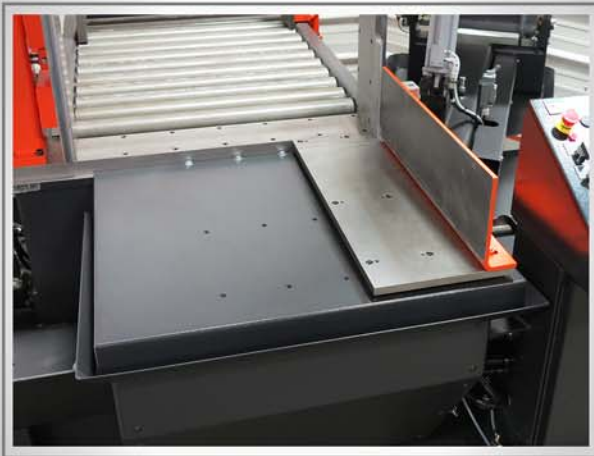
Adjustable Feed Rate & Cut Pressure

The saw arm Feed Rate can be adjusted from zero to 3 inches per second. Cutting pressure can be adjusted for effective metal removal rates.

0-34" Stroke Bar-Feed

The Automatic Bar Feed System on the saw has a 0-34" feed stroke shuttle vise, with multiple indexing to feed lengths automatically until the saw is out of stock, or a pre-determined number cuts have been made. The Material Jogging feature allows the operator to inch the material forward.

(Shown w/ Optional Top Clamps)



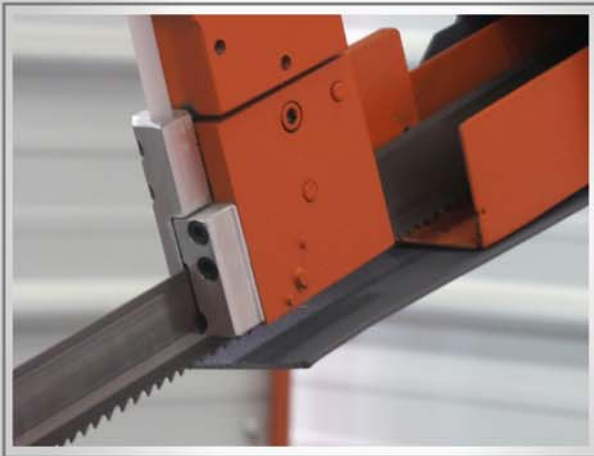
24" Solid Discharge Table

A Standard Solid Discharge Table provides easier handling after the cut. The table is 24" in length and is fully coolant panned.

Full Stroking Vises

The saw has a full-stroking main & feed vise for clamping of materials. Vises are enclosed for added strength and to keep out chips and debris. Wear plates, on the vise and saw bed, are heavy-duty and easily replaceable. The clamping pressure is easily adjusted to clamp various materials.



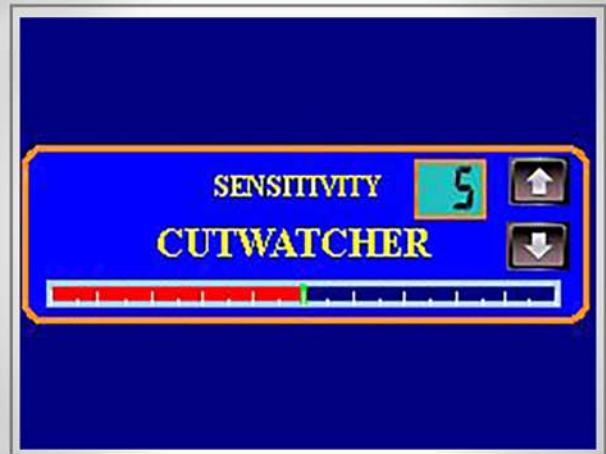


Carbide Blade Guides

The Blade Guide System incorporates side and back blade guides that utilize carbide inserts for long wear, stability and maximum blade support.

Cut Watcher System

The patented Cut Watcher system monitors the cut for squareness to a pre-set deviation value. The system shuts down the saw when the pre-set value is exceeded. This is a must for production cutting.



Powered Guide Arm

The Powered, Moveable Guide Arm provides optimum blade support as material size changes. It quickly adjusts the blade guides that hold the blade securely, providing straighter cuts and longer blade life.

Blade Brush

A shaft-driven Blade Brush is standard for positive removal of metal chips that lodge in the blade gullets. This system ensures a cleaner blade, more accurate cuts, and prolonged blade life.



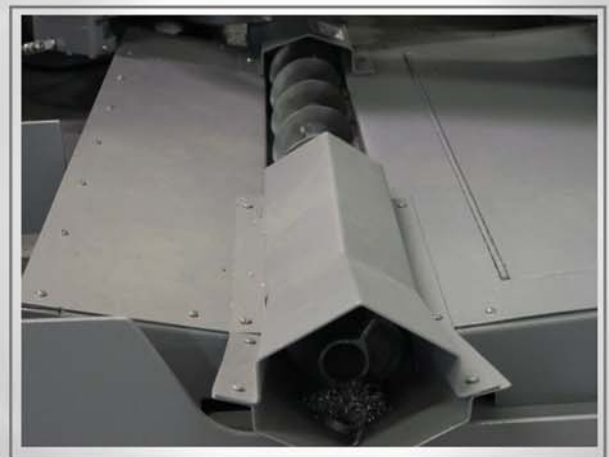
Powered Blade Tension

The Powered Blade Tensioner maintains proper blade tension at all times during the cut, compensating for blade stretch. Changing blades on the saw is done in minutes, with the use of the Powered Blade Tensioner.



Chip Auger System

The Chip Auger removes chips from the cutting area into an easy-to-empty container. Chips and coolant are automatically separated into two different containers.





Emergency Stop & Key-Lock

The saw is equipped with a safety Emergency Stop cut-off switch. This allows the operator to closely monitor the cutting process and quickly stop it if needed.

The Safety Key-Lock is used to disable saw operation during maintenance.

Other Safety Features

The saw will automatically shut off if the blade breaks or is out of stock, shown by the Broken Blade or Out-of-Stock Indicators.

The Panic Stop halts all automatic functions.

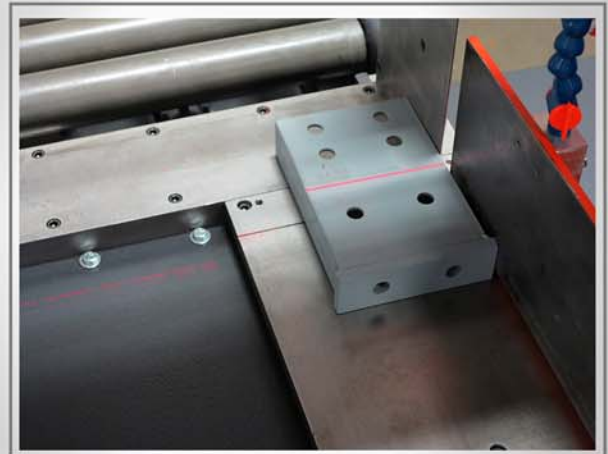


Built-In Flood Coolant System

The saw has a totally built-in coolant system with sealed coolant pump, with coolant that is dispensed through a flex-tube nozzle to flood the center of the cut. A cutting fluid clean-up hose is provided for machine wash down.

Optional Laser Light System

An Optional Laser Light indicates either above or below where the blade will enter the material for the cut.



Optional Full Capacity Top Clamps

Full Capacity Top Clamps can be added to the main and feed vise for vertical clamping of structural shapes and when entire "mill bundles" are to be cut.



Optional Spray Mist Lubrication

The optional spray mist system lubricates the blade with a mist that is adjustable at a rate of 4 - 200 pulses per minute, pushing the mix of oil/air out of the delivery line to the nozzle.



HEM[®]SAW

Other Available Options: Roller Stock Tables



**Band Saws • Material Handling • Metalworking Fluids
Custom Applications • Factory Service Department • Fast-Available Parts**

Proudly Made in the U.S.A. for Over 50 Years



Horizontal Pivot

Horizontal Miter

Vertical

Dual Column

Wide Flange



www.hemsaw.com

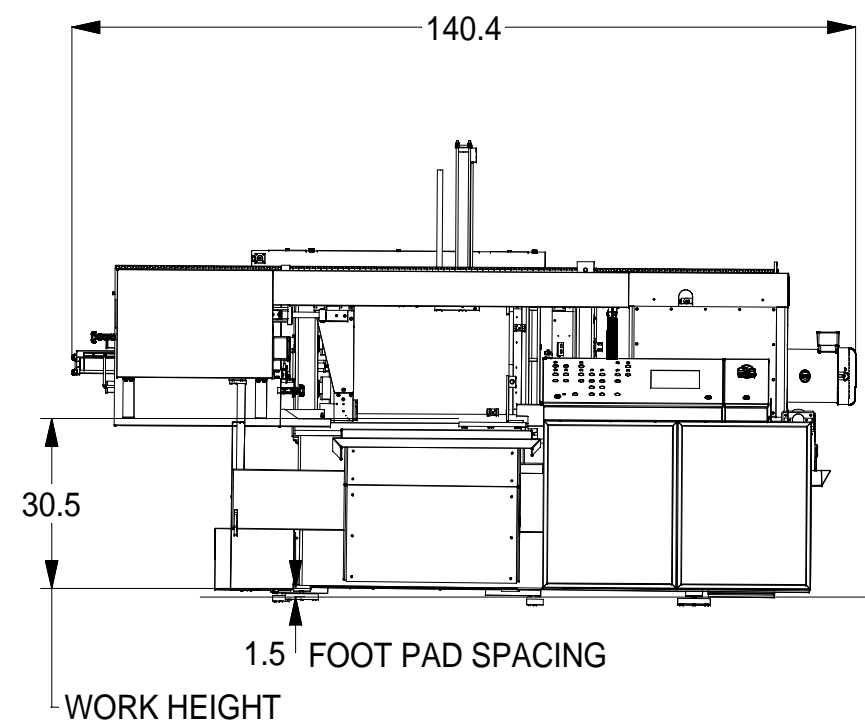
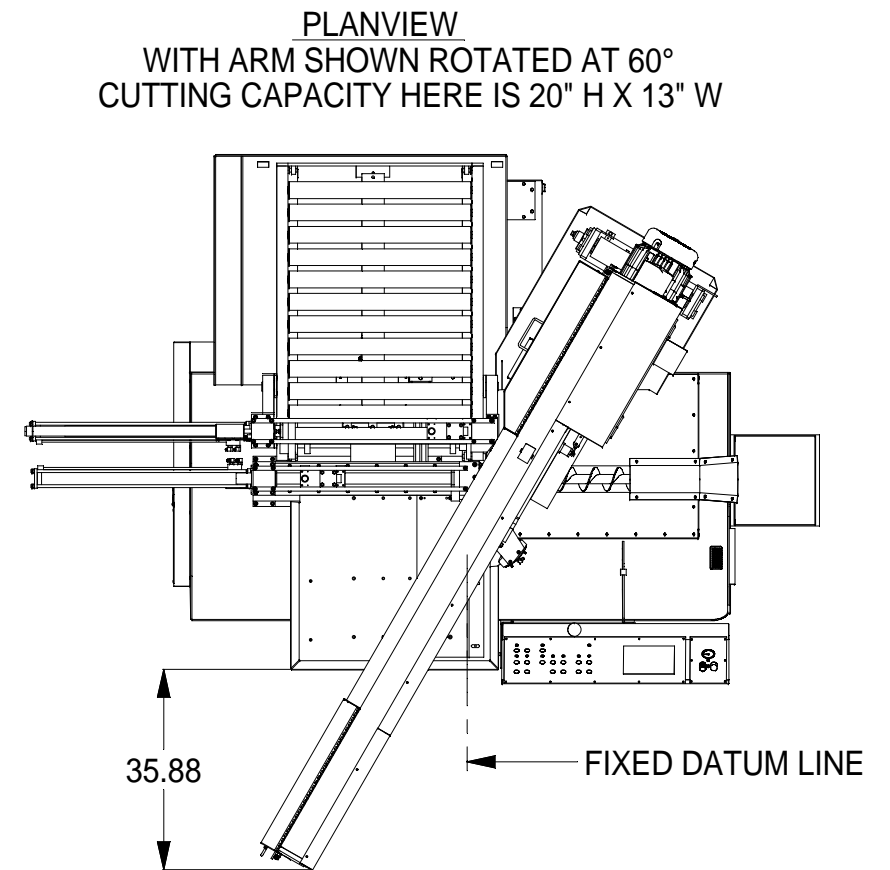
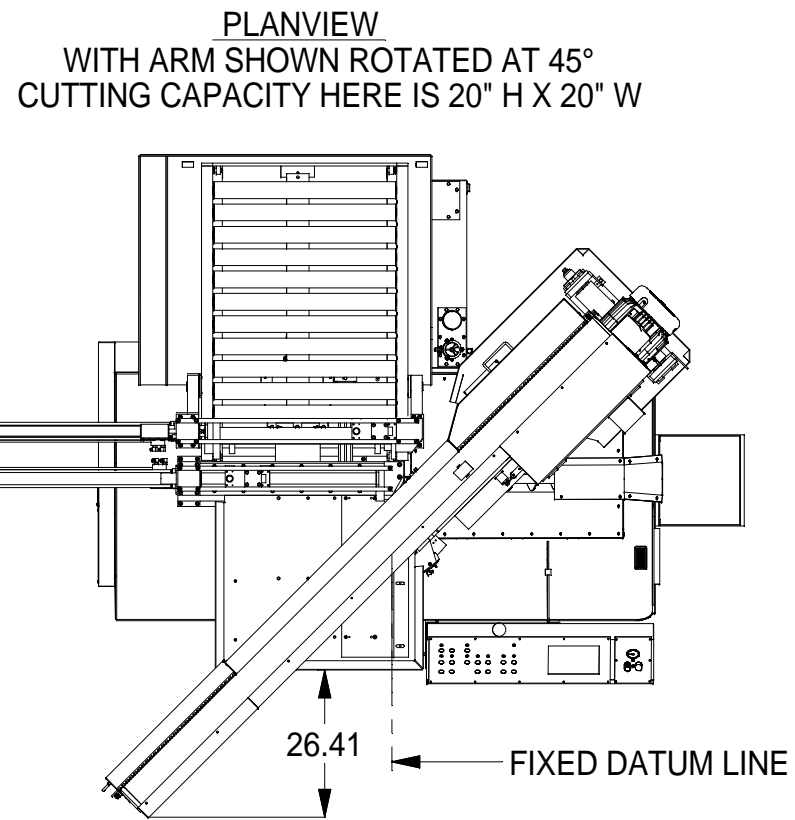
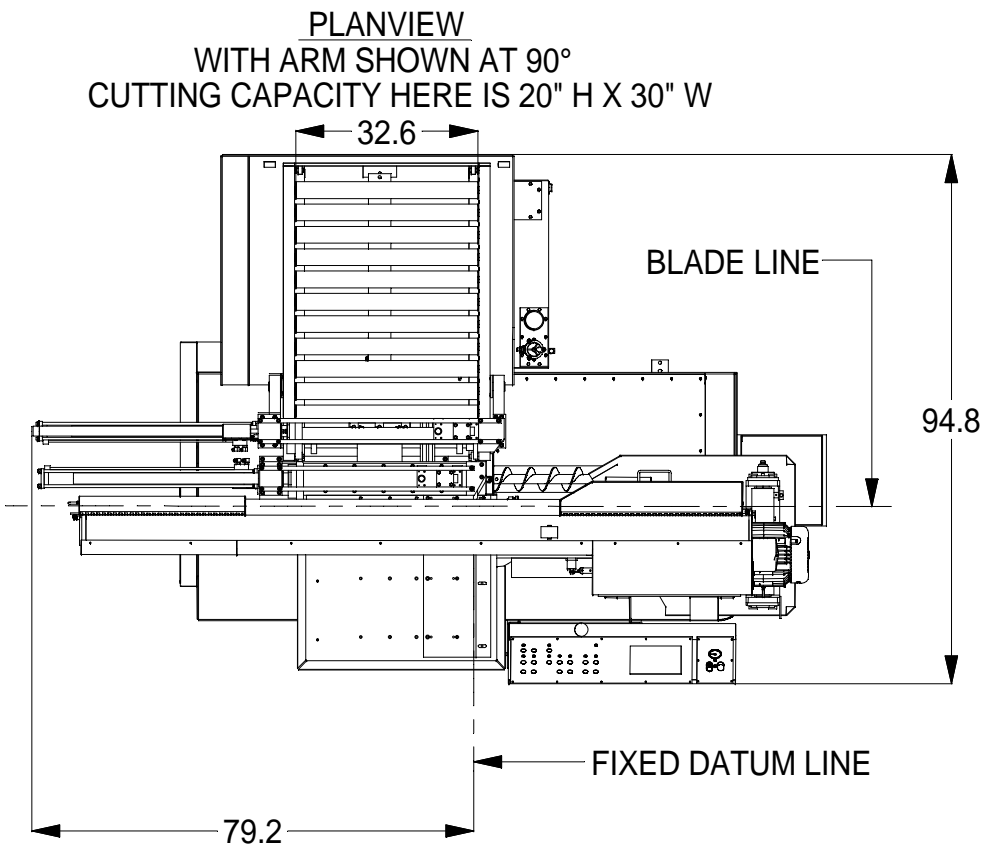
P.O. Box 1148, Pryor, OK 74362

Toll Free: (888) 729-7787 • Phone: (918) 825-4821

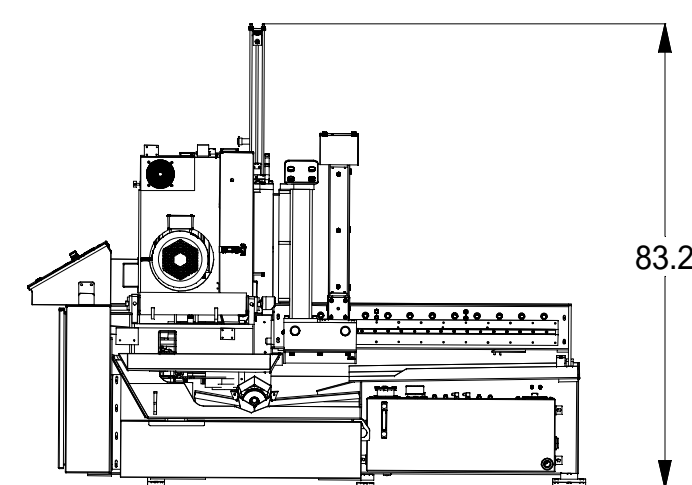
Fax: (918) 825-4824 • info@hemsaw.com

HEM, Inc., whose policy is one of continuous improvement, reserves the right to change the price, specifications, or design, as well as discontinue any model, at any time without notice and without incurring any obligations. Dimensions may vary. Please contact HEM, Inc. for a certified dimensional drawing of your specific model.
Copyright 112800 HEM, Inc. All rights reserved.

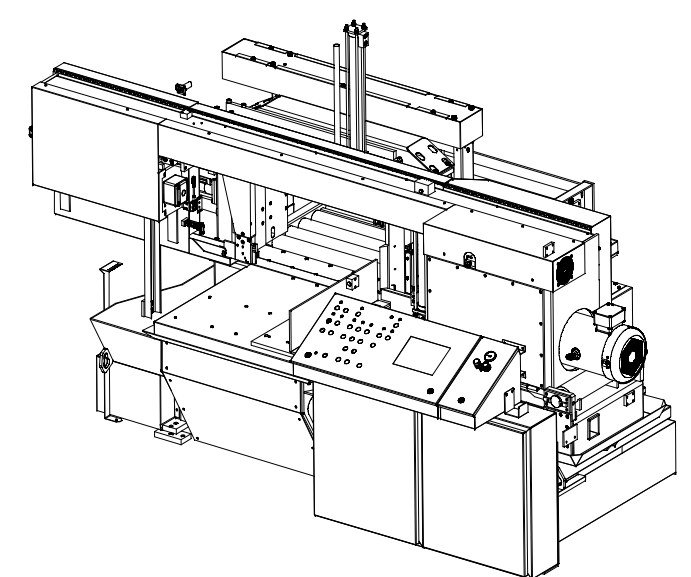
NOTE: HEM INC. WHOSE POLICY IS ONE OF CONTINUOUS IMPROVEMENTS,
RESERVES THE RIGHT TO CHANGE SPECIFICATIONS, PRICE OR DESIGN
AT ANY TIME WITHOUT NOTICE AND WITHOUT INCURRING OBLIGATIONS
ALL DIMENSIONS +/- 1.00"



FRONTVIEW



SIDE ELEVATION



HEM , INC.
MID-AMERICA INDUSTRIAL DISTRICT
P.O. BOX 1148 PRYOR, OK 74361
H0014986 | SHEET 1 OF 1
HURRICANE LAYOUT
B-006516-594 C

HEM[®] SAW

— The saw that cuts straight. —

Hurricane 2030M



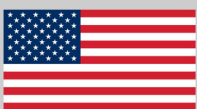
Horizontal Miter, Metal-Cutting Production Band Saw

Capacity: 20" h x 30" w @ 90° • 20" h x 20" w @ 45° L • 20" h x 13" w @ 60° L

Blade: 1-1/2" x 20'6" x .050" • Motor: 10 HP • Hydraulics: 2 HP

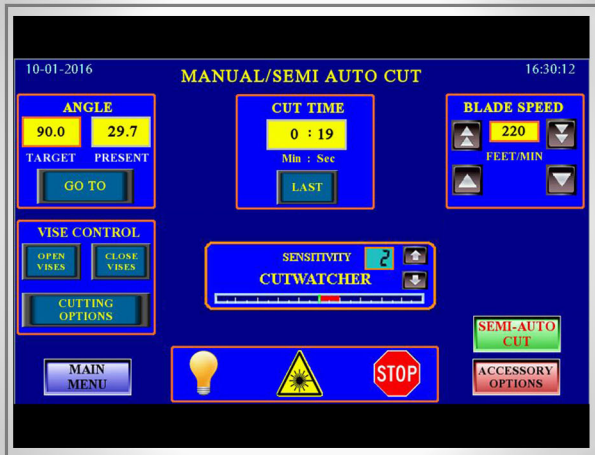
Front Mounted Control Console

The Control Console is located on the front of the saw for operator convenience.



Touch Screen Controls

The touch screen display provides easy-to-use menu navigation for programming information required for a semi-automatic job. Other functions include system information, diagnostics and saw operation parameters.



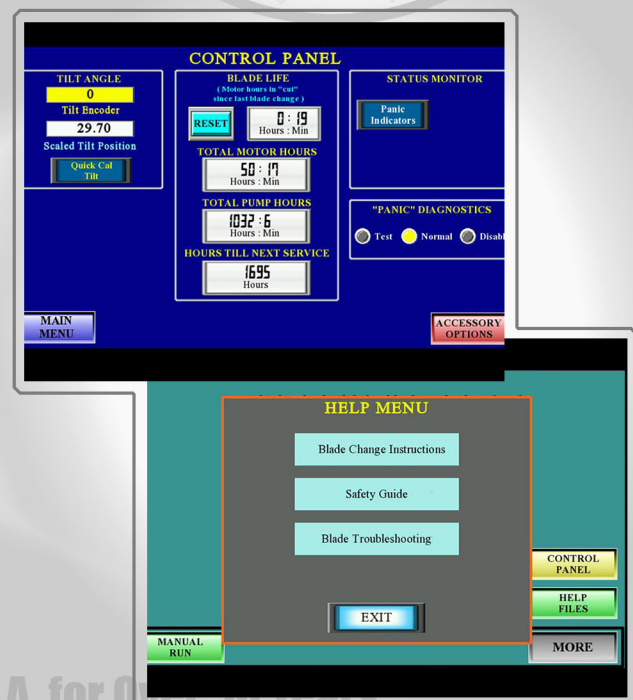
Manual/Semi-Auto Cut Screen

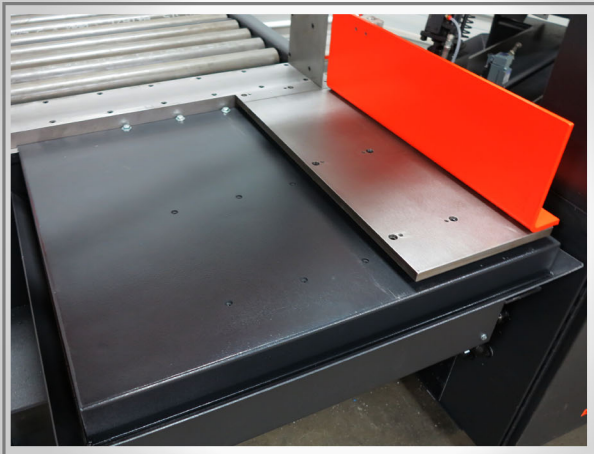
The cut screen allows the operator to set the angle/blade speed, and to control vising options, to set up for a manual or semi-automatic cut. The arm traverse is also controlled from this screen.

Control Panel & Help Files

The control panel allows for quick I.O. and system operation to calibrate the encoders and help diagnose a possible problem with operation of the saw.

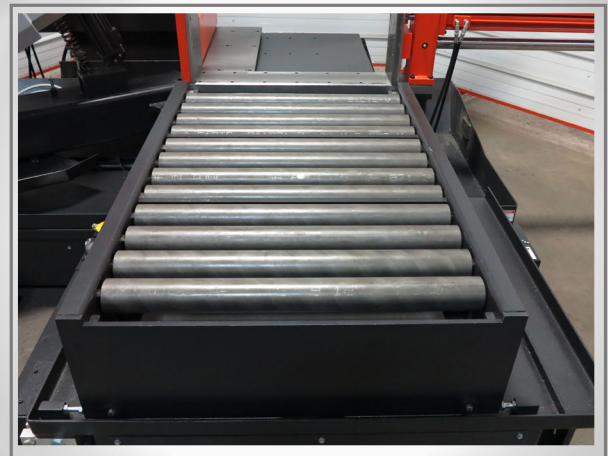
Help files are available to assist in operating the saw. These include: blade change instructions, safety guide, and blade troubleshooting chart.





24" Solid Discharge Table

A standard Solid Discharge Table provides easier handling after the cut. The table is 24" in length and is fully coolant panned.



34" Roller Load Table

A 34" Roller Load Table is provided for handling of material before the cut.

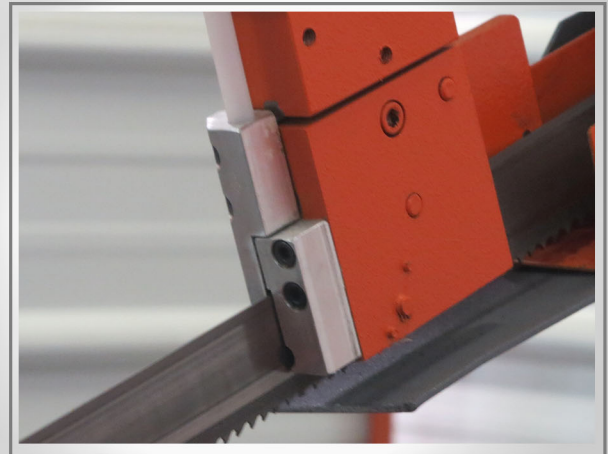
Full Stroking Main Vise

A Full-Stroking Main Vise clamps material at the turn of a switch, and holds the material in place to ensure accurate cuts. The clamping pressure is easily adjusted to clamp various materials



Carbide Blade Guides

The Blade Guide System incorporates side and back blade guides that utilize carbide inserts for long wear, stability and maximum blade support.



Power Miter w/ Angle Readout

The mitering capability is an easy adjustment powered from the console with LED Angle Readout displayed. This allows the operator to change angles quickly and accurately.

Adjustable Blade Speed

Blade speed can be adjusted with an infinitely variable speed drive from the console with push button controls. The blade speed is shown on the console with LED Readout.





Adjustable Feed Rate & Cut Pressure

The saw arm Feed Rate can be adjusted from zero to 3 inches per second. Cutting pressure can be adjusted for effective metal removal rates.

Powered Guide Arm

The Powered, Moveable Guide Arm provides optimum blade support as material size changes. It quickly adjusts the guides that hold the blade securely, providing straighter cuts and longer blade life.



Powered Blade Tension

The Powered Blade Tensioner maintains proper blade tension at all times during the cut, compensating for blade stretch. Changing blades on the saw is done in minutes, with the use of the Powered Blade Tensioner.

Chip Auger System

A Chip Auger removes chips from the cutting area into an easy-to-empty container. Chips and coolant are automatically separated into two different containers.



Blade Brush

A shaft-driven Blade Brush is standard for positive removal of metal chips that lodge in the blade gullets. This system ensures a cleaner blade, more accurate cuts, and prolonged blade life.

Built-In Flood Coolant System

The saw has a totally built-in coolant system with sealed coolant pump, with coolant that is dispensed through the guides on each side of the cut.





Emergency Stop

The saw is equipped with a safety Emergency Stop cut-off switch. This allows the operator to closely monitor the cutting process and quickly stop it if needed.

Other Safety Features

The Lock Out - Tag Out is used to disable saw operation during maintenance.

The saw will automatically shut off if the blade breaks, shown by the Broken Blade Indicator.

The Panic Stop halts all automatic functions.



Optional Cut Watcher[®] System

An Optional patented Cut Watcher[®] system monitors the cut for squareness to a pre-set deviation value. The system shuts down the saw when the pre-set value is exceeded.

Optional Laser Light System

An Optional Laser Light indicates either above or below where the blade will enter the material for the cut.



Optional Spray Mist Lubrication

The optional spray mist system lubricates the blade with a mist that is adjustable at a rate of 4 - 200 pulses per minute, pushing the mix of oil/air out of the delivery line to the nozzle.

Optional Full Capacity Top Clamp - Main Vise

A Full Capacity Top Clamp can be added to the main vise for vertical clamping of structural shapes and when entire "mill bundles" are to be cut.



Other Available Options:

Optional 5' or 10' Idle Roller Stock Table



Band Saws • Material Handling • Metalworking Fluids
Custom Applications • Factory Service Department • Fast-Available Parts

Proudly Made in the U.S.A. for Over 50 Years



Horizontal Pivot



Horizontal Miter



Vertical



Dual Column



Wide Flange



www.hemsaw.com

P.O. Box 1148, Pryor, OK 74362

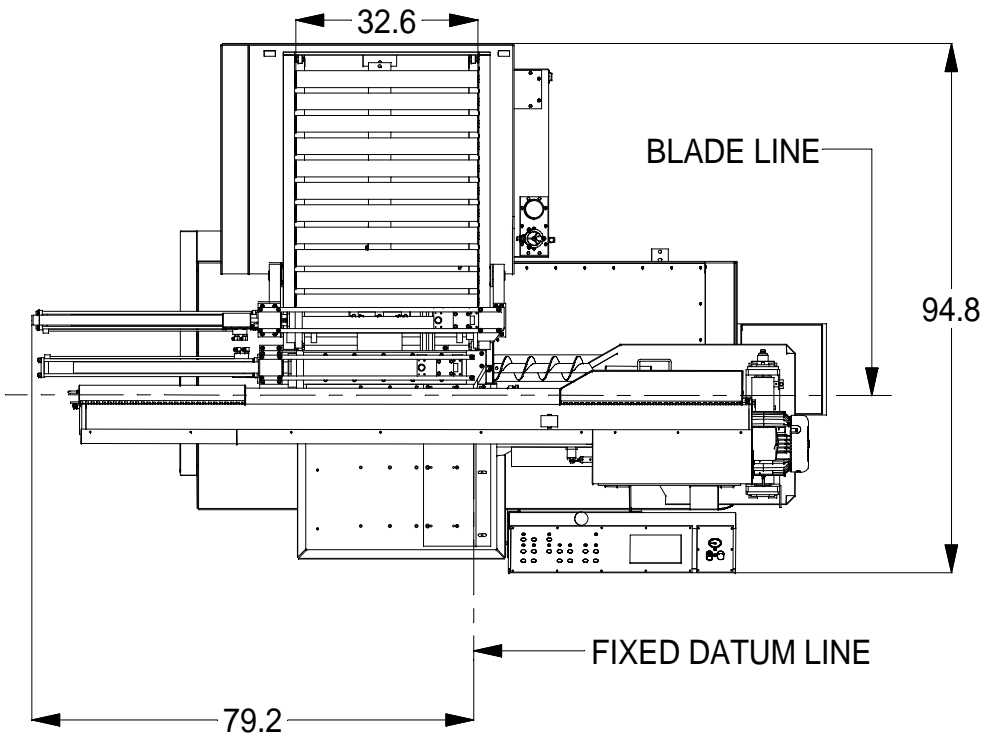
Toll Free: (888) 729-7787 • Phone: (918) 825-4821

Fax: (918) 825-4824 • info@hemsaw.com

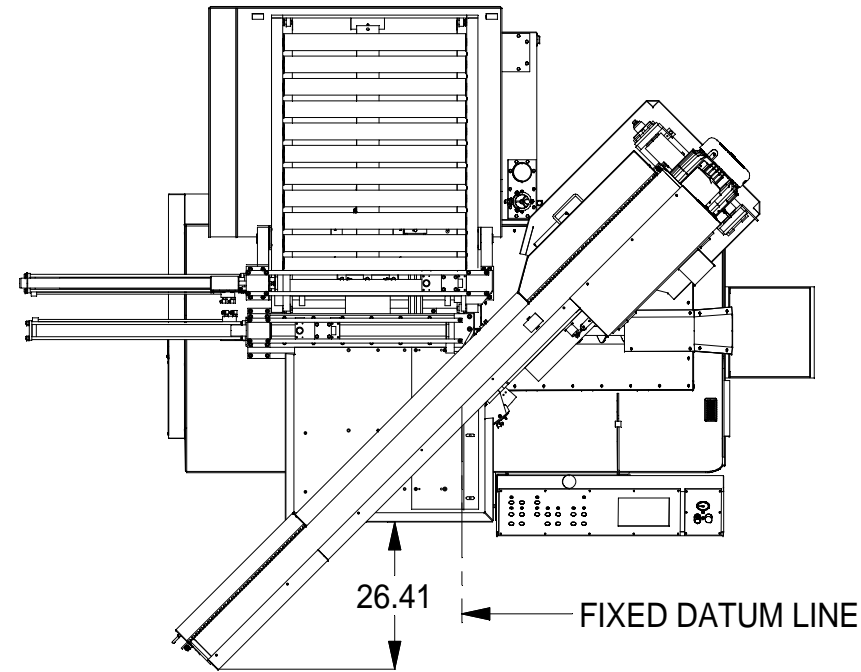
HE&M, Inc., whose policy is one of continuous improvement, reserves the right to change the price, specifications, or design, as well as discontinue any model, at any time without notice and without incurring any obligations. Dimensions may vary. Please contact HE&M, Inc. for a certified dimensional drawing of your specific model. Copyright 112800 HE&M, Inc. All rights reserved.

NOTE: HEM INC. WHOSE POLICY IS ONE OF CONTINUOUS IMPROVEMENTS,
RESERVES THE RIGHT TO CHANGE SPECIFICATIONS, PRICE OR DESIGN
AT ANY TIME WITHOUT NOTICE AND WITHOUT INCURRING OBLIGATIONS
ALL DIMENSIONS +/- 1.00"

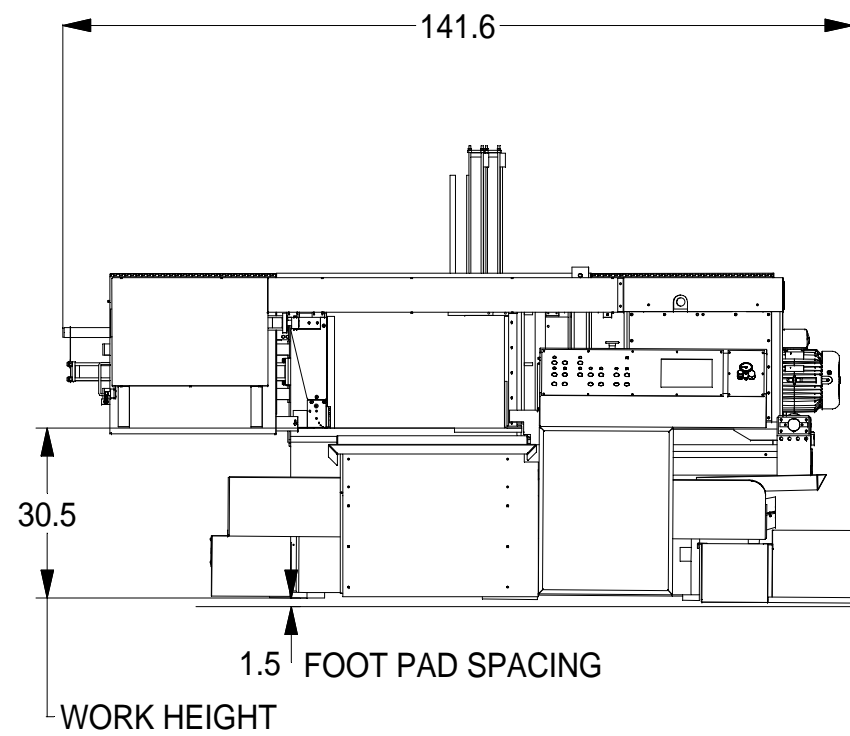
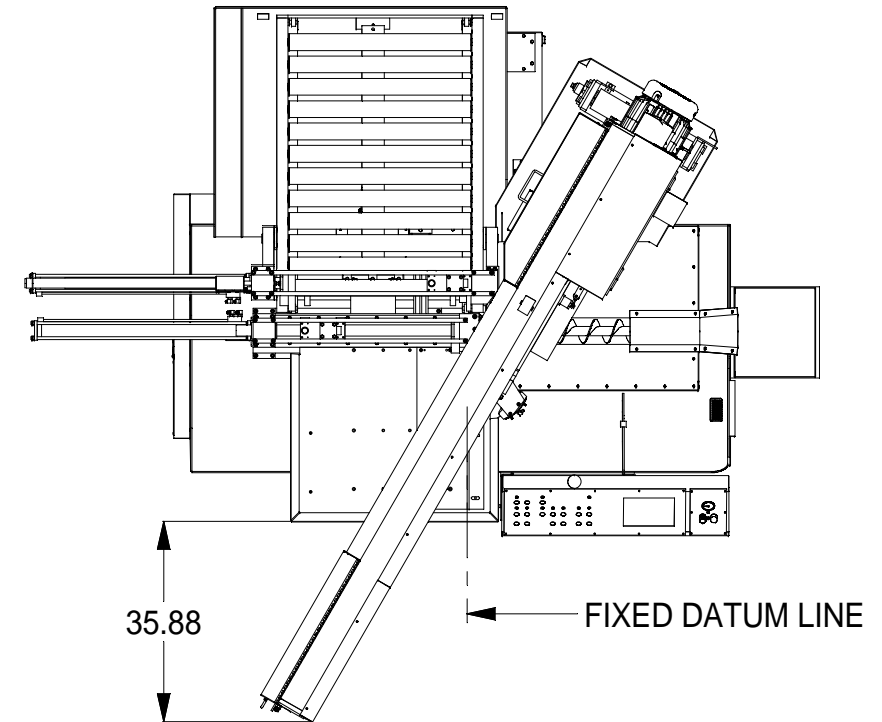
PLANVIEW
WITH ARM SHOWN AT 90°
CUTTING CAPACITY HERE IS 20" H X 30" W



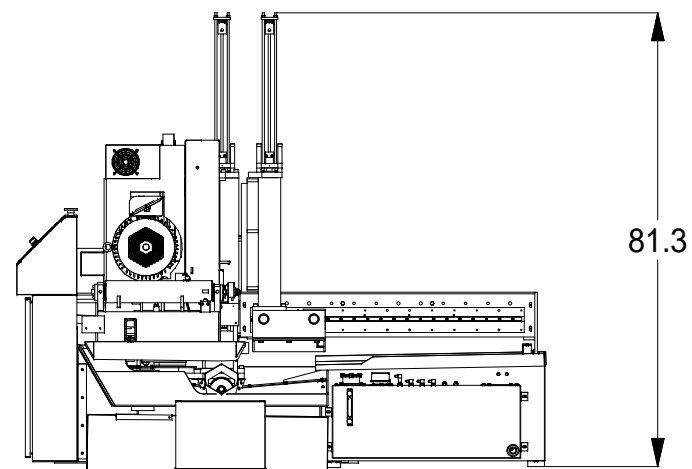
PLANVIEW
WITH ARM SHOWN ROTATED AT 45°
CUTTING CAPACITY HERE IS 20" H X 20" W



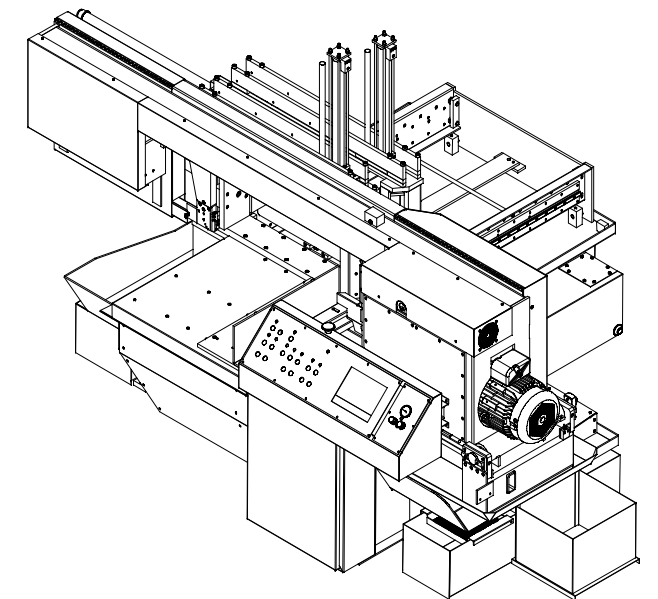
PLANVIEW
WITH ARM SHOWN ROTATED AT 60°
CUTTING CAPACITY HERE IS 20" H X 13" W



FRONTVIEW



SIDE ELEVATION



HEM , INC.
MID-AMERICA INDUSTRIAL DISTRICT
P.O. BOX 1148 PRYOR, OK 74361
H0014986 | SHEET 1 OF 1
HURRICANE LAYOUT
B-006516-594 B