

HEM[®] SAW

—The saw that cuts straight.—

H3236M-DC



**Shown w/ Optional Outboard Vise & Chip Auger*

Dual Column, Heavy-Duty, Metal-Cutting Production Band Saw

Capacity: 36" W x 32" H • Blade: 2" x 27'0" x .063" • Motor: 20 HP • Hydraulics: 5 HP

Swing-Away Control Console

The Control Console is located on the front of the saw, in a swing-away console, for operator convenience.





24" Roller Discharge Table

A standard Roller Discharge Table provides easier handling after the cut. The table is 24" in length and is fully coolant panned.

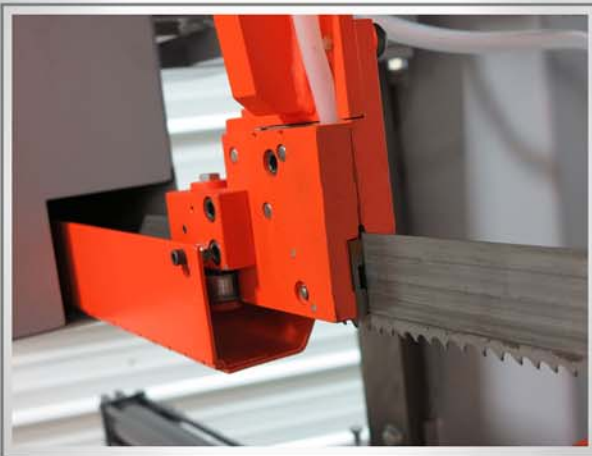
Full Stroking Main Vise

A Full-Stroking Main Vise clamps material at the turn of a switch, and holds the material in place to ensure accurate cuts. The clamping pressure is easily adjusted to clamp various materials



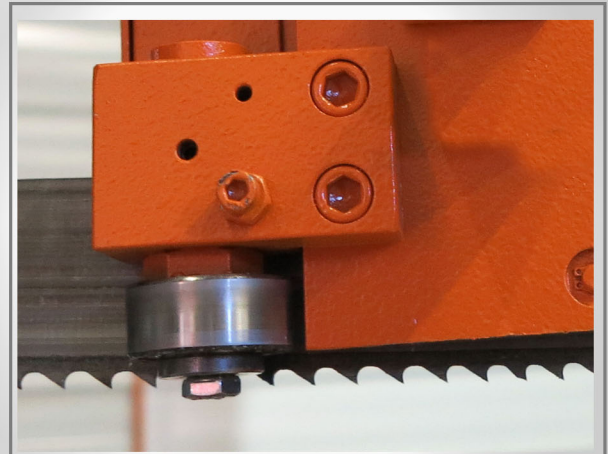
Carbide Blade Guides

The Blade Guide System incorporates side and back blade guides that utilize carbide inserts for long wear, stability and maximum blade support.



Lead In/Lead Out Roller Guides

In addition to precision-ground flat carbides, the H3236M-DC also uses roller guides which reduce vibration when cutting hard materials.



Blade Brush

A shaft-driven Blade Brush is standard for positive removal of metal chips that lodge in the blade gullets. This system ensures a cleaner blade, more accurate cuts, and prolonged blade life.



Cut Watcher[®] System

The patented Cut Watcher[®] system monitors the cut for squareness to a pre-set deviation value. The system shuts down the saw when the pre-set value is exceeded.





Push Button Blade Speed

Blade speed can be adjusted with an infinitely variable speed drive from the console with push button controls. The blade speed is shown on the console with LED Readout.



Powered Guide Arm

The Powered, Moveable Guide Arm provides optimum blade support as material size changes. It quickly adjusts the guides that hold the blade securely, providing straighter cuts and longer blade life.



Powered Blade Tension

The Powered Blade Tensioner maintains proper blade tension at all times during the cut, compensating for blade stretch. Changing blades on the saw is done in minutes, with the use of the Powered Blade Tensioner.

Adjustable Feed Rate & Cut Pressure

The saw arm Feed Rate can be adjusted from zero to 3 inches per second. Cutting pressure can be adjusted for effective metal removal rates.



Emergency Stop

The saw is equipped with a safety Emergency Stop cut-off switch. This allows the operator to closely monitor the cutting process and quickly stop it if needed.

Other Safety Features

The Lock Out - Tag Out is used to disable saw operation during maintenance.

The saw will automatically shut off if the blade breaks, shown by the Broken Blade Indicator.

The Panic Stop halts all automatic functions.





Built-In Flood Coolant System

The saw has a totally built-in coolant system with sealed coolant pump, with coolant that is dispensed through the guides on each side of the cut and a flex-tube nozzle to flood the center of the cut.

Optional Computer Controlled Traverse

The Optional Computer Controlled Traverse, or CCT, controls the feed rate and cutting force to maintain the optimum cutting rate.

With the CCT option, a Material List is provided with the touch screen. The list includes the recommended blade speeds, cutting rates and blade pitch for the type and size of material.

Class/Grade/Size	Teeth/Inch	Speed	Rate
0# Carbon Steel 1008-1026 8"	2/3	237	14.0
1 Carbon Steel 1008-1026 10"	1.4/2.0	222	12.0
2 Carbon Steel 1008-1026 12"	1.4/2.0	208	10.0
3 Carbon Steel 1008-1026 16"	.9/1.0	194	9.0
4 Carbon Steel 1008-1026 20"	.9/1.0	181	8.0
5 Carbon Steel 1030 2"	4/6	270	10.0
6 Carbon Steel 1030 4"	3/4	252	12.0
7 Carbon Steel 1030 6"	2/3	236	10.0
8 Carbon Steel 1030 8"	2/3	221	10.0
9 Carbon Steel 1030 10"	1.4/2.0	207	9.0

M42 Blade Speeds & Rates
CARBON STEEL

MAIN MENU [M42 Blade Speeds & Rates]



Optional 24" Solid Discharge Table

An Optional Solid Discharge Table in lieu of rollers. The table is 24" in length and is fully coolant panned.

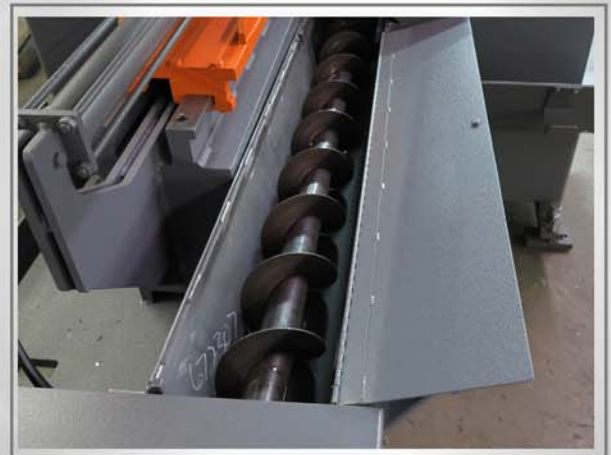
Optional Top Clamp - Main Vise

A Full Capacity Top Clamp can be added to the main vise for vertical clamping of structural shapes and when entire “mill bundles” are to be cut.



Optional FC Top Clamp - Outboard Vise

A Full Capacity Top Clamp can be added to the outboard vise for vertical clamping of structural shapes and when entire “mill bundles” are to be cut.



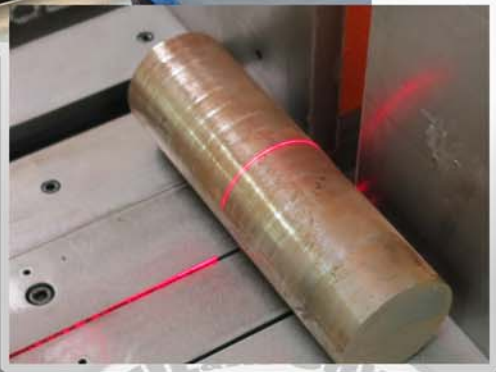
Optional Chip Auger System

An Optional Chip Auger removes chips from the cutting area into an easy-to-empty container. Chips and coolant are automatically separated into two different containers.

Optional Shadow or Laser Light System

The Shadow Light uses a high intensity light that casts a shadow of the blade onto the material to be cut, indicating the exact spot where the blade will enter the material.

A Laser Light indicates either above or below where the blade will enter the material for the cut.



Optional Spray Mist Lubrication

The optional spray mist system lubricates the blade with a mist that is adjustable at a rate of 4 - 200 pulses per minute, pushing the mix of oil/air out of the delivery line to the nozzle.



Other Available Options: 2-5/8" Blade Option – HD Gear Box, Pedestal Console. Discharge & Roller Stock Tables

HEM[®] SAW



**Band Saws • Material Handling • Metalworking Fluids
Custom Applications • Factory Service Department • Fast-Available Parts**

Proudly Made in the U.S.A. for Over 50 Years



Horizontal Pivot



Horizontal Miter



Vertical



Dual Column



Wide Flange

HEM[®] SAW

— The saw that cuts straight. —

www.hemsaw.com

P.O. Box 1148, Pryor, OK 74362

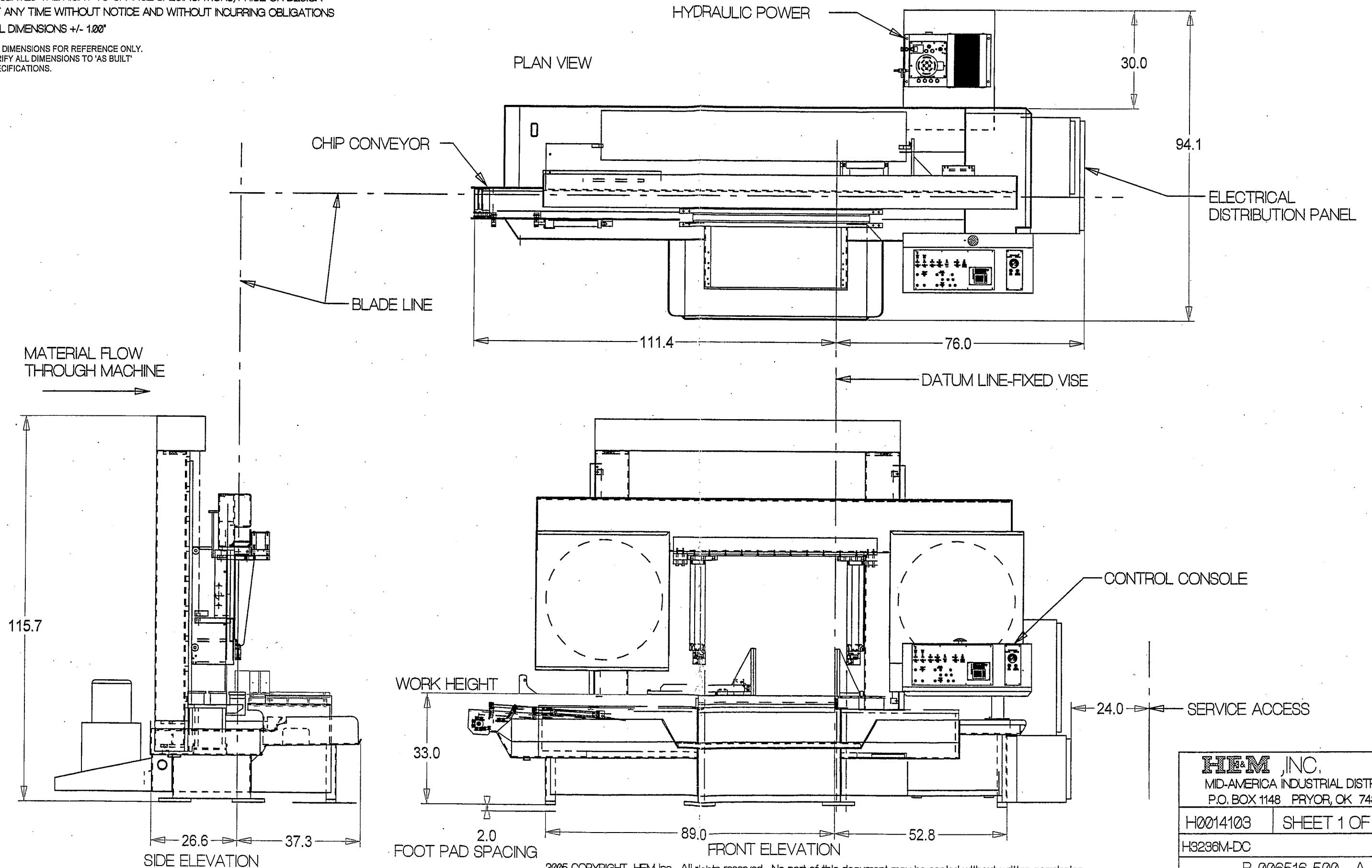
Toll Free: (888) 729-7787 • Phone: (918) 825-4821

Fax: (918) 825-4824 • info@hemsaw.com

HEM, Inc., whose policy is one of continuous improvement, reserves the right to change the price, specifications, or design, as well as discontinue any model, at any time without notice and without incurring any obligations. Dimensions may vary. Please contact HEM, Inc. for a certified dimensional drawing of your specific model.
Copyright 112800 HEM, Inc. All rights reserved.

NOTE: HEM INC. WHOSE POLICY IS ONE OF CONTINUOUS IMPROVEMENTS,
RESERVES THE RIGHT TO CHANGE SPECIFICATIONS, PRICE OR DESIGN
AT ANY TIME WITHOUT NOTICE AND WITHOUT INCURRING OBLIGATIONS
ALL DIMENSIONS +/- .000"

ALL DIMENSIONS FOR REFERENCE ONLY.
VERIFY ALL DIMENSIONS TO 'AS BUILT'
SPECIFICATIONS.



2005 COPYRIGHT HEM Inc. All rights reserved. No part of this document may be copied without written permission.

HEM , INC. MID-AMERICA INDUSTRIAL DISTRICT P.O. BOX 1148 PRYOR, OK 74361	
H0014103	SHEET 1 OF 1
H3236M-DC	
B-006516-500 A	