

HEM[®] SAW

—The saw that cuts straight.—

Cyclone A-4



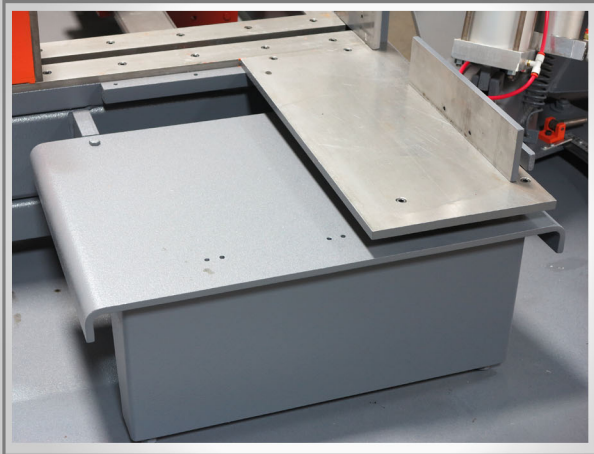
Horizontal Miter, Metal-Cutting Production Band Saw

Capacity: 16" x 22" w @ 90° • 16" x 15" w @ 45° (Miter One Direction Only)
Blade: 1-1/4" x 16'0" x .042" • Bar-Feed: 0-24" (4 Indexes) • Motor: 7.5 HP

Easy View Console

The Control Console is located in an Easy View style control on a gooseneck mount, and can be pivoted for operator convenience.





20" Exit Discharge Support

A standard 20" solid exit support for discharge provides easier handling after the cut.

0-24" Stroke Bar-Feed (4 Indexes)

The automatic Bar-Feed on the saw is comprised of an air operated shuttle vise feed system with a zero to 24" four index feed stroke. The feed table includes a vertical alignment bar and mechanical readout.



Part Quantity & Feed Counter

On the part quantity counter, press the buttons to show the desired number of pieces to cut. The digital display will match the number put in and will count down with each piece cut.

The bar-feed will stroke the number of times the feed counter is set to, up to 4 indexes.

Adjustable Main & Feed Vise

The saw vises slide on the vise ways. When the clamp is engaged, the air powered short stroking vise is pulled toward the fixed wear plate, clamping the material in place to ensure accurate cuts. The clamping pressure is easily adjusted to clamp various materials



Hold Down Fixtures

Hold down fixtures also aid in the clamping of multiple pieces of material in a single row.

Adjustable Feed Rate & Cut Pressure

The saw arm Feed Rate can be adjusted from zero to 3 inches per second. Cutting pressure can be adjusted for effective metal removal rates.





Push Button Blade Speed

Blade speed can be adjusted with an infinitely variable speed drive from the console with push button controls. The blade speed is shown on the console with LED Readout.

Carbide Blade Guides

A blade guide system is composed of side and back guides, which are flat carbide inserts.



Manual Adjustable Guide Arm

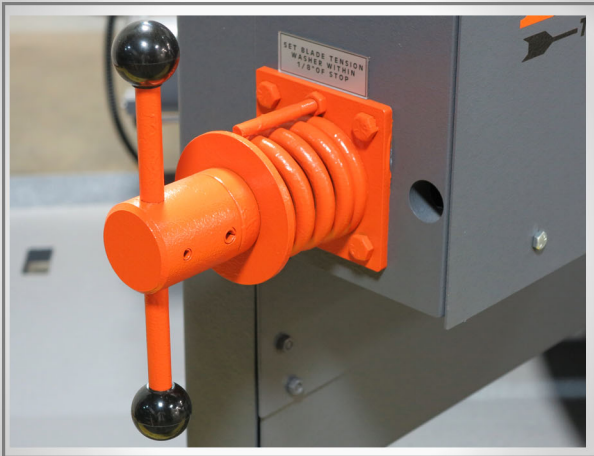
The Guide Arm is adjusted manually to help stabilize the blade and reduce vibration, providing a better cutting surface.



Proudly Made in the U.S.A. for Over 50 Years

Cut Watcher[®] System

The patented Cut Watcher[®] system monitors the cut for squareness to a pre-set deviation value. The system shuts down the saw when the pre-set value is exceeded. This is a must for production cutting.



Manual Blade Tension

The Manual Blade Tensioner helps to keep the blade at the proper tension. It assures and maintains proper blade tension at all times during the cutting process.

Blade Brush

A shaft-driven Blade Brush is standard for positive removal of metal chips that lodge in the blade gullets. This system ensures a cleaner blade, more accurate cuts, and prolonged blade life.





Miter Scale

The Cyclone A-4 gives you both speed and accuracy in mitering angles up to 45 degrees. Swing the arm to the desired angle as indicated on the protractor scale. The Protractor scale is easy to read, and locks at all angles. A manual clamp secures cutting angle quickly.

Built-In Flood Coolant System

The saw has a totally built-in coolant system with sealed coolant pump. The coolant is dispensed through the guide arms on both sides of the cut. A cutting fluid clean-up hose is provided for machine wash down.



Safety Features

The saw is equipped with a safety Emergency Stop cut-off switch. This allows the operator to closely monitor the cutting process and quickly stop it if needed.

The saw will automatically shut off if the blade breaks or is out of stock, shown by the Broken Blade or Out-of-Stock Indicators.

The Panic Stop halts all automatic functions.

Optional Reduced Capacity Top Clamps - Main or Feed Vise

Optional reduced capacity top clamps can be added to the main or feed vise for vertical clamping of structural shapes and when entire "mill bundles" are to be cut.



Optional Spray Mist Lubrication

The optional spray mist system lubricates the blade with a mist that is adjustable at a rate of 4 - 200 pulses per minute, pushing the mix of oil/air out of the delivery line to the nozzle.

Optional 5' or 10' Idle Roller Stock Table

5' or 10' optional idle roller tables with 12" centers are available for material handling. The tables are non-coolant panned and height adjustable to be "trued-in" with the saw. They are designed to move even the large bars with ease and accuracy.





Other Available Options:

Full Width Discharge Plate, 60° Miter Capability (Manual Cut Only),
3rd Holding Vise on Feed, Laser Light System, Powered Blade Tension,

**Band Saws • Material Handling • Metalworking Fluids
Custom Applications • Factory Service Department • Fast-Available Parts**

Proudly Made in the U.S.A. for Over 50 Years



Horizontal Pivot



Horizontal Miter



Vertical



Dual Column



Wide Flange

HEM[®]SAW
—The saw that cuts straight.—

www.hemsaw.com

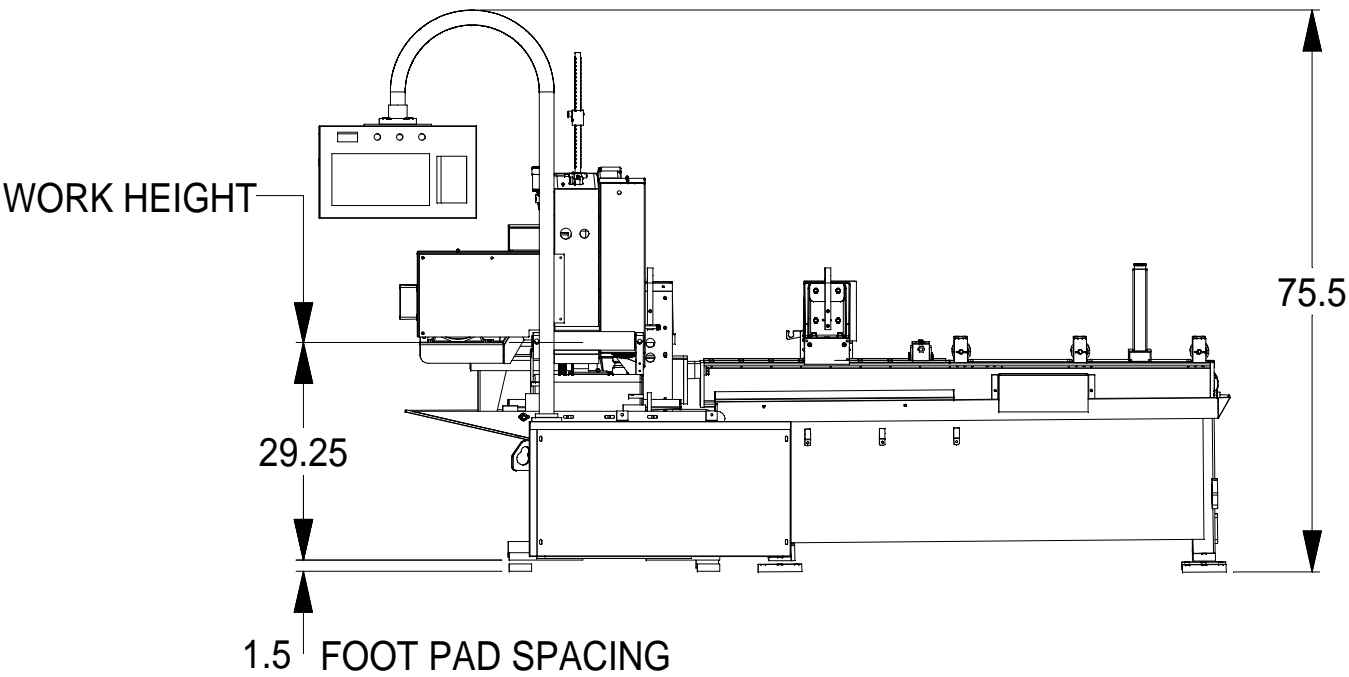
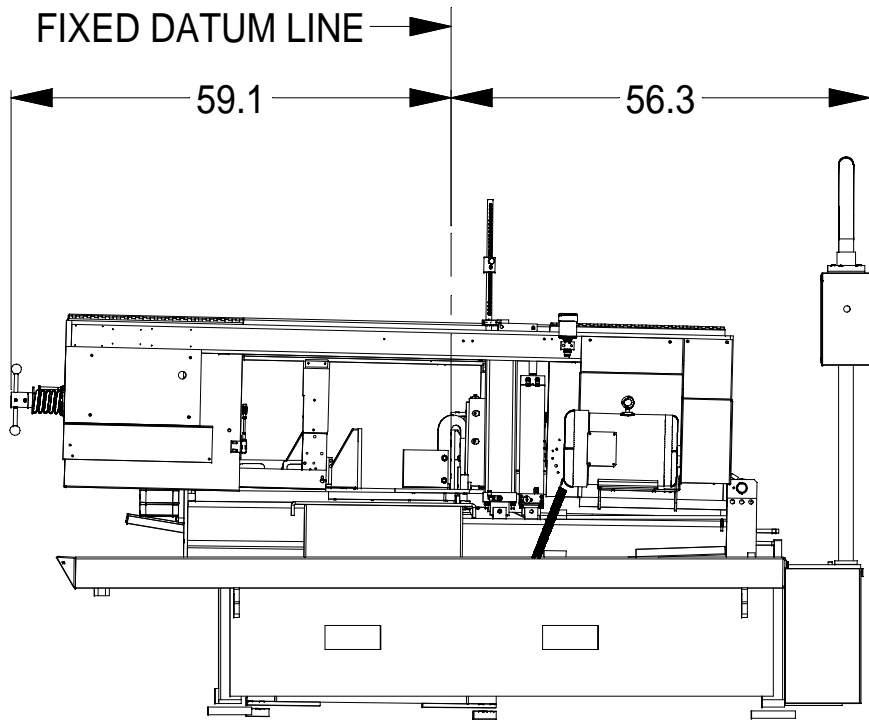
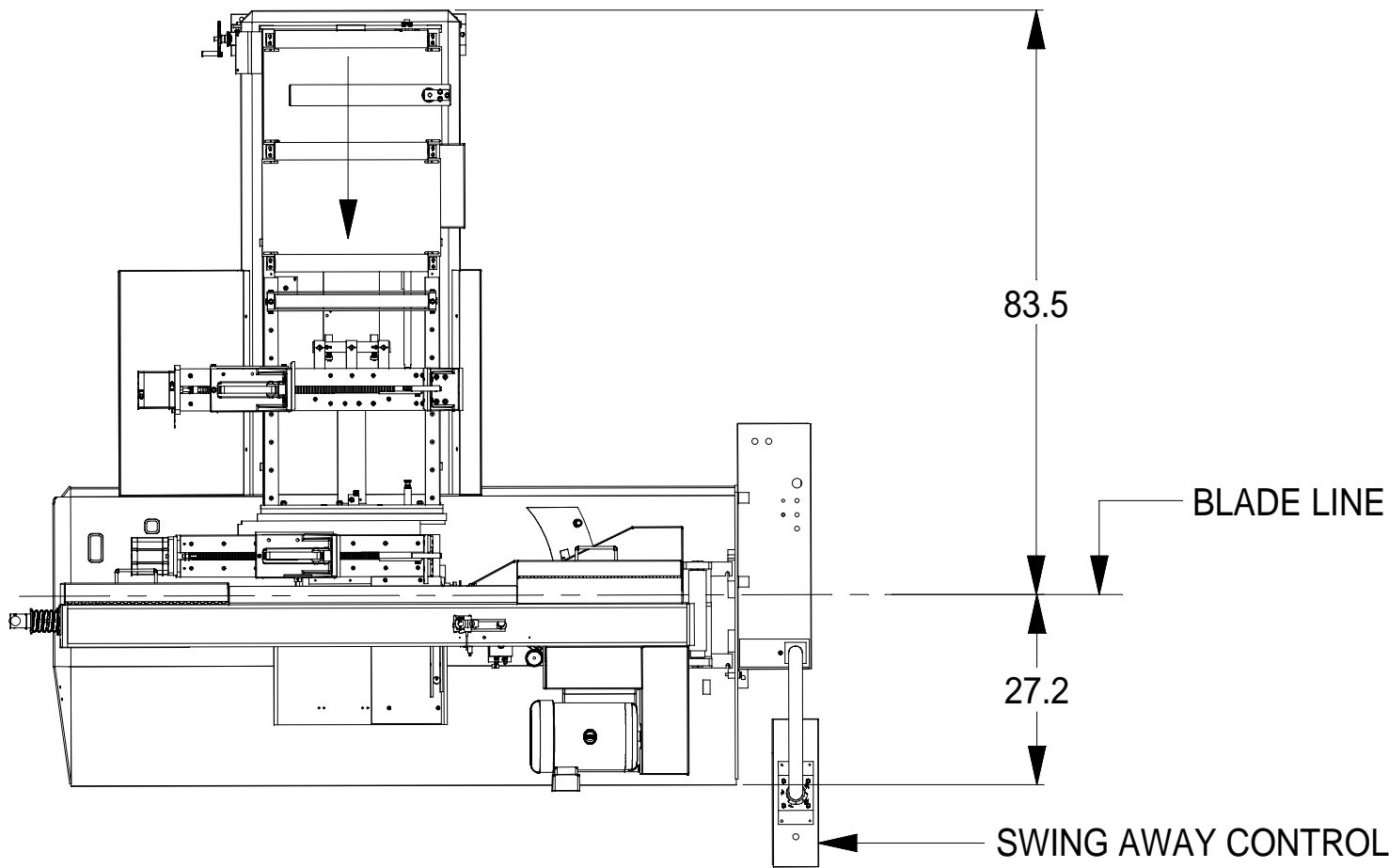
P.O. Box 1148, Pryor, OK 74362

Toll Free: (888) 729-7787 • Phone: (918) 825-4821

Fax: (918) 825-4824 • info@hemsaw.com

HEM, Inc., whose policy is one of continuous improvement, reserves the right to change the price, specifications, or design, as well as discontinue any model, at any time without notice and without incurring any obligations. Dimensions may vary. Please contact HEM, Inc. for a certified dimensional drawing of your specific model. Copyright 112800 HEM, Inc. All rights reserved.

NOTE: HEM INC. WHOSE POLICY IS ONE OF CONTINUOUS IMPROVEMENTS,
RESERVES THE RIGHT TO CHANGE SPECIFICATIONS, PRICE OR DESIGN
AT ANY TIME WITHOUT NOTICE AND WITHOUT INCURRING OBLIGATIONS
ALL DIMENSIONS +/- 1.00"



HEM ,INC. MID-AMERICA INDUSTRIAL DISTRICT P.O. BOX 1148 PRYOR, OK 74361	
LAYOUT	
CYCLONE A-4	
B-006516-706	A

HEM[®] SAW

—The saw that cuts straight.—

Cyclone A-C



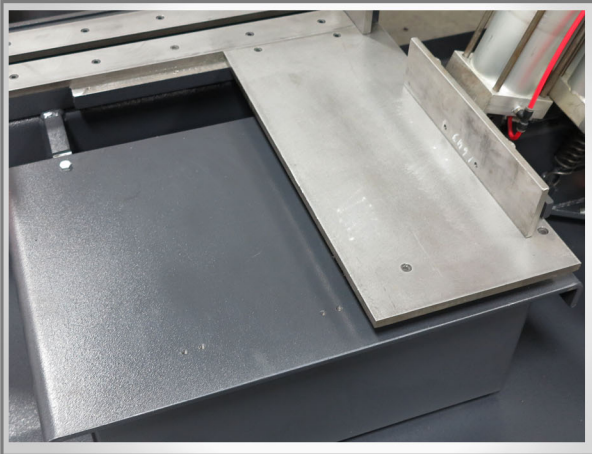
Horizontal Miter, Metal-Cutting Production Band Saw

Capacity: 16" x 22" w @ 90° • 16" x 15" w @ 45° (Miter One Direction Only)
Blade: 1-1/4" x 16'0" x .042" • Bar-Feed: 0-24" (Multiple Index) • Motor: 7.5 HP

Easy View Console

The Control Console is located in an Easy View style control on a gooseneck mount, and can be pivoted for operator convenience.



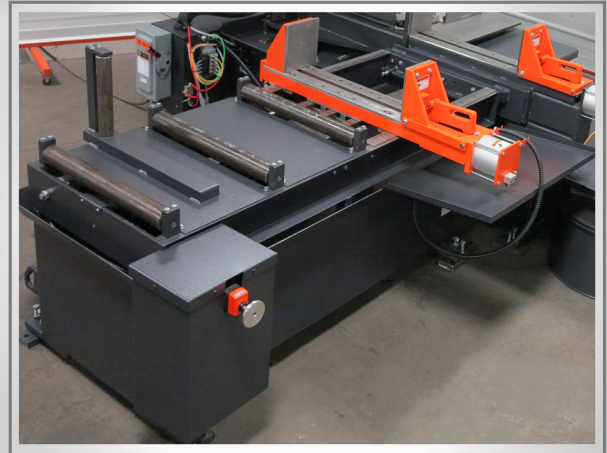


20" Exit Discharge Support

A standard 20" solid exit support for discharge provides easier handling after the cut.

0-24" Stroke Bar-Feed (Multiple Indexes)

The automatic Bar-Feed on the saw is comprised of an air operated shuttle vise feed system with a zero to 24" multiple index feed stroke. The feed table includes a vertical alignment bar and mechanical readout.



Computer Controlled Feed

The Standard Computer Controlled Feed System allows the operator to select a program for automatic operation. The operator can program the saw to automatically cut up to 99 different jobs of various lengths from the same bar. Lengths over 24 inches are automatically set and compensated.

Adjustable Main & Feed Vise

The saw vises slide on the vise ways. When the clamp is engaged, the air powered short stroking vise is pulled toward the fixed wear plate, clamping the material in place to ensure accurate cuts. The clamping pressure is easily adjusted to clamp various materials



Hold Down Fixtures

Hold down fixtures also aid in the clamping of multiple pieces of material in a single row.



Adjustable Feed Rate & Cut Pressure

The saw arm Feed Rate can be adjusted from zero to 3 inches per second. Cutting pressure can be adjusted for effective metal removal rates.





Push Button Blade Speed

Blade speed can be adjusted with an infinitely variable speed drive from the console with push button controls. The blade speed is shown on the console with LED Readout.

Carbide Blade Guides

A blade guide system is composed of side and back guides, which are flat carbide inserts.

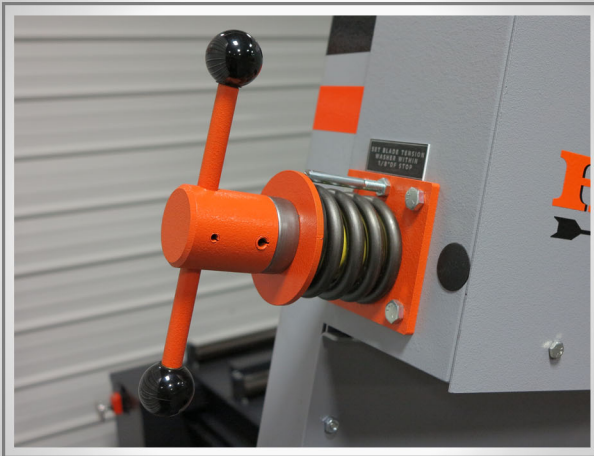


Manual Adjustable Guide Arm

The Guide Arm is adjusted manually to help stabilize the blade and reduce vibration, providing a better cutting surface.

Cut Watcher[®] System

The patented Cut Watcher[®] system monitors the cut for squareness to a pre-set deviation value. The system shuts down the saw when the pre-set value is exceeded. This is a must for production cutting.

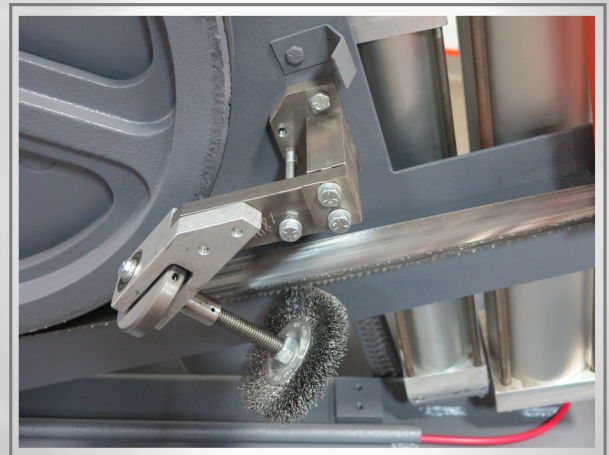


Manual Blade Tension

The Manual Blade Tensioner helps to keep the blade at the proper tension. It assures and maintains proper blade tension at all times during the cutting process.

Blade Brush

A shaft-driven Blade Brush is standard for positive removal of metal chips that lodge in the blade gullets. This system ensures a cleaner blade, more accurate cuts, and prolonged blade life.





Miter Scale

The Cyclone A-C gives you both speed and accuracy in mitering angles up to 45 degrees. Swing the arm to the desired angle as indicated on the protractor scale. The Protractor scale is easy to read, and locks at all angles. A manual clamp secures cutting angle quickly.

Built-In Flood Coolant System

The saw has a totally built-in coolant system with sealed coolant pump. The coolant is dispensed through the guide arms on both sides of the cut. A cutting fluid clean-up hose is provided for machine wash down.



Safety Features

The saw is equipped with a safety Emergency Stop cut-off switch. This allows the operator to closely monitor the cutting process and quickly stop it if needed.

The saw will automatically shut off if the blade breaks or is out of stock, shown by the Broken Blade or Out-of-Stock Indicators.

The Panic Stop halts all automatic functions.



Optional Reduced Capacity Top Clamps - Main or Feed Vise

Optional reduced capacity top clamps can be added to the main or feed vise for vertical clamping of structural shapes and when entire “mill bundles” are to be cut.



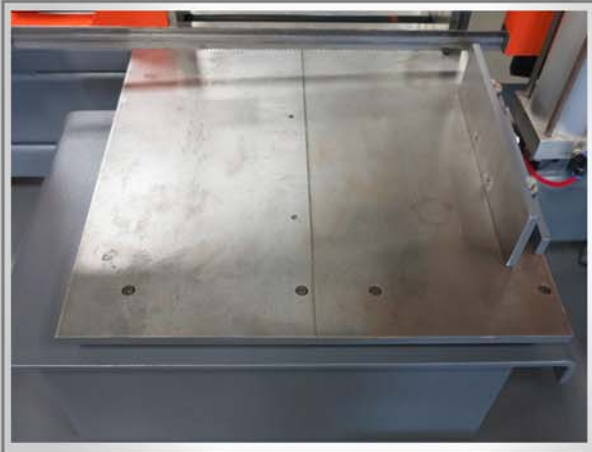
Optional Spray Mist Lubrication

The optional spray mist system lubricates the blade with a mist that is adjustable at a rate of 4 - 200 pulses per minute, pushing the mix of oil/air out of the delivery line to the nozzle.

Optional 5' or 10' Idle Roller Stock Table

5' or 10' optional idle roller tables with 12" centers are available for material handling. The tables are non-coolant panned and height adjustable to be “trued-in” with the saw. They are designed to move even the large bars with ease and accuracy.



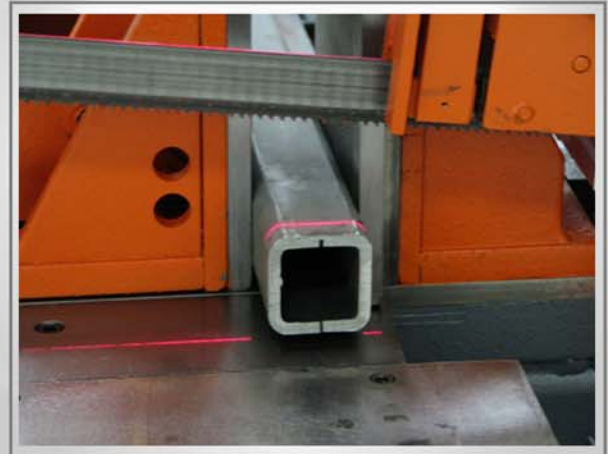


Optional Full Width Discharge Plate

An Optional Full Width Discharge Plate can be added in lieu of the standard 18" exit support.

Optional Laser Light System

An Optional Laser Light indicates either above or below where the blade will enter the material for the cut.



Optional Air Powered Blade Tension

An Optional Air Powered Blade Tensioner helps to keep the blade at the proper tension. It assures and maintains proper blade tension at all times during the cutting process.

Other Available Options:

60° Miter Capability (Manual Cut Only), 3rd Holding Vise on Feed



**Band Saws • Material Handling • Metalworking Fluids
Custom Applications • Factory Service Department • Fast-Available Parts**

Proudly Made in the U.S.A. for Over 50 Years



Horizontal Pivot



Horizontal Miter



Vertical



Dual Column



Wide Flange



www.hemsaw.com

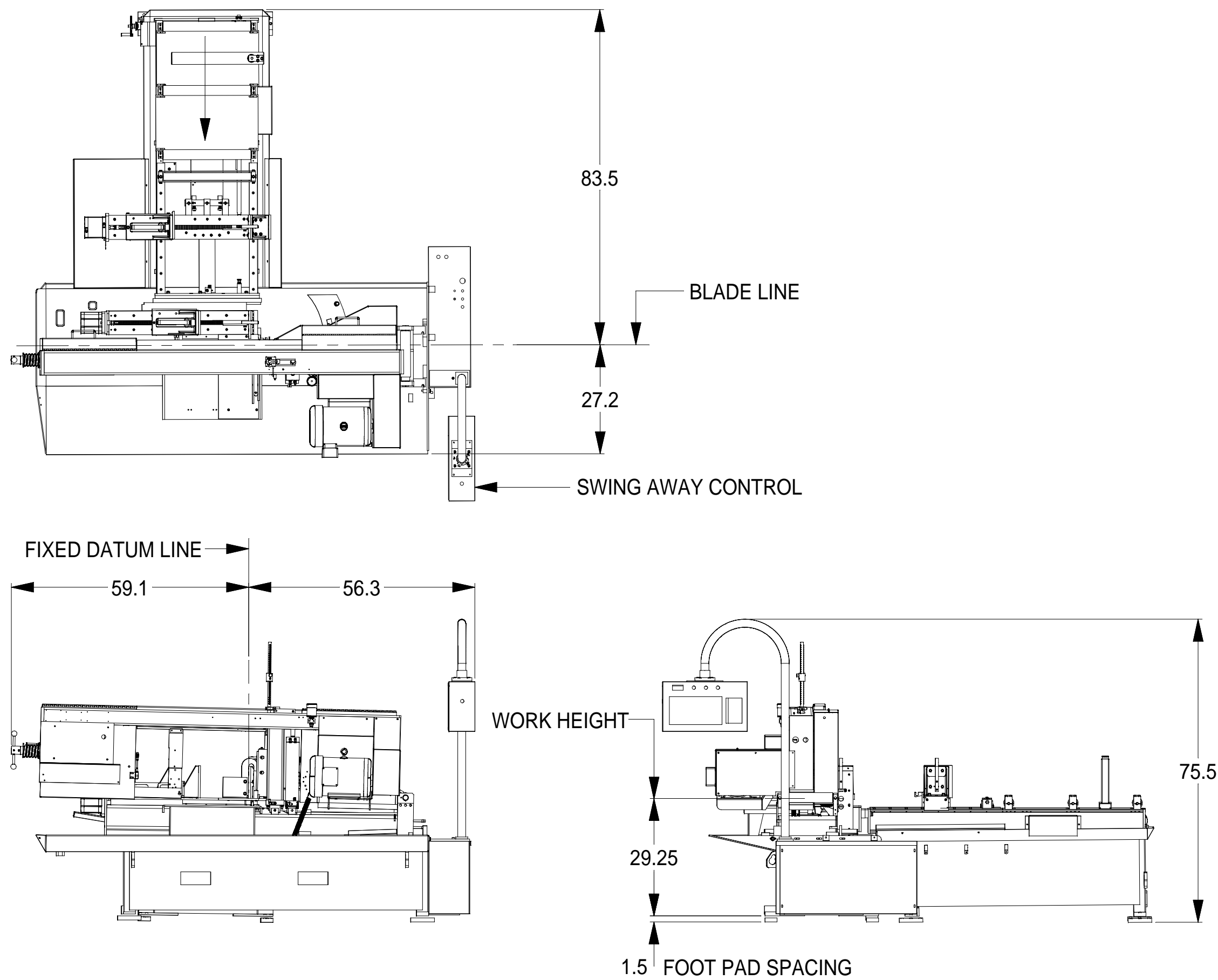
P.O. Box 1148, Pryor, OK 74362

Toll Free: (888) 729-7787 • Phone: (918) 825-4821

Fax: (918) 825-4824 • info@hemsaw.com

HEM, Inc., whose policy is one of continuous improvement, reserves the right to change the price, specifications, or design, as well as discontinue any model, at any time without notice and without incurring any obligations. Dimensions may vary. Please contact HEM, Inc. for a certified dimensional drawing of your specific model.
Copyright 112800 HEM, Inc. All rights reserved.

NOTE: HEM INC. WHOSE POLICY IS ONE OF CONTINUOUS IMPROVEMENTS,
RESERVES THE RIGHT TO CHANGE SPECIFICATIONS, PRICE OR DESIGN
AT ANY TIME WITHOUT NOTICE AND WITHOUT INCURRING OBLIGATIONS
ALL DIMENSIONS +/- 1.00"



HEM ,INC. MID-AMERICA INDUSTRIAL DISTRICT P.O. BOX 1148 PRYOR, OK 74361
LAYOUT
CYCLONE A-C
B-006516-665 B

HEM[®] SAW

—The saw that cuts straight.—

Cyclone M



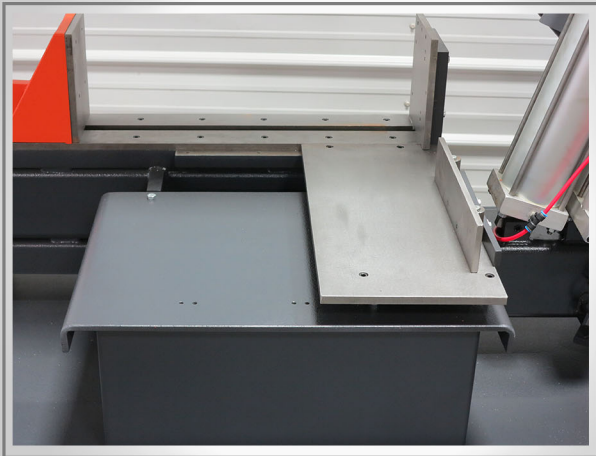
Horizontal Miter, Metal-Cutting Production Band Saw

Capacity: 16" x 22" w @ 90° • 16" x 15" w @ 45° Left • 16" x 7" w @ 60° Left
Blade: 1-1/4" x 16'0" x .042" • Motor: 7.5 HP

Easy View Console

The Control Console is located in an Easy View style control on a gooseneck mount, and can be pivoted for operator convenience.



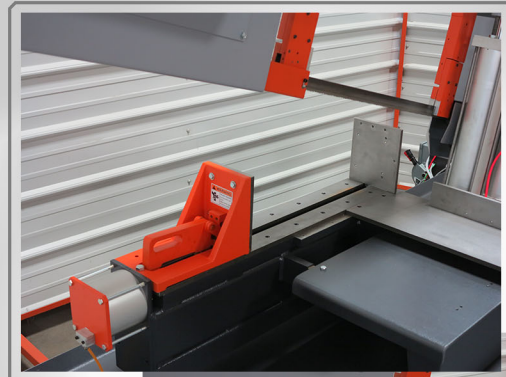


20" Exit Discharge Support

A standard 20" solid exit support for discharge provides easier handling after the cut.

Adjustable Main Vise

The saw vise slides on the vise ways. When the clamp is engaged, the air powered short stroking vise is pulled toward the fixed wear plate, clamping the material in place to ensure accurate cuts. The clamping pressure is easily adjusted to clamp various materials.



Hold Down Fixture

A hold down fixture also aids in the clamping of multiple pieces of material in a single row.

Adjustable Feed Rate & Cut Force

The saw arm Feed Rate can be adjusted from zero to 3 inches per second. Cutting pressure / force can be adjusted for effective metal removal rates.



Push Button Blade Speed

Blade speed can be adjusted with an infinitely variable speed drive from the console with push button controls. The blade speed is shown on the console with LED Readout.

Manual Adjustable Guide Arm

The Guide Arm is adjusted manually to help stabilize the blade and reduce vibration, providing a better cutting surface.





Carbide Blade Guides

A blade guide system is composed of side and back guides, which are flat carbide inserts.

Manual Blade Tension

The Manual Blade Tensioner helps to keep the blade at the proper tension. It assures and maintains proper blade tension at all times during the cutting process.



Blade Brush

A shaft-driven Blade Brush is standard for positive removal of metal chips that lodge in the blade gullets. This system ensures a cleaner blade, more accurate cuts, and prolonged blade life.

Built-In Flood Coolant System

The saw has a totally built-in coolant system with sealed coolant pump. The coolant is dispensed through the guide arms on both sides of the cut.



Miter Scale

The miter scale gives you both speed and accuracy in mitering angles up to 60 degrees. Swing the arm to the desired angle as indicated on the protractor scale. A manual clamp secures the cutting angle quickly.

Safety Features

The saw is equipped with a safety Emergency Stop cut-off switch. This allows the operator to closely monitor the cutting process and quickly stop it if needed.

The Panic Stop halts all automatic functions.

The saw will automatically shut off if the blade breaks, shown by the Broken Blade Indicator.





Optional Reduced Capacity Top Clamp - Main Vise

An Optional reduced capacity top clamp can be added to the main vise for vertical clamping of structural shapes.

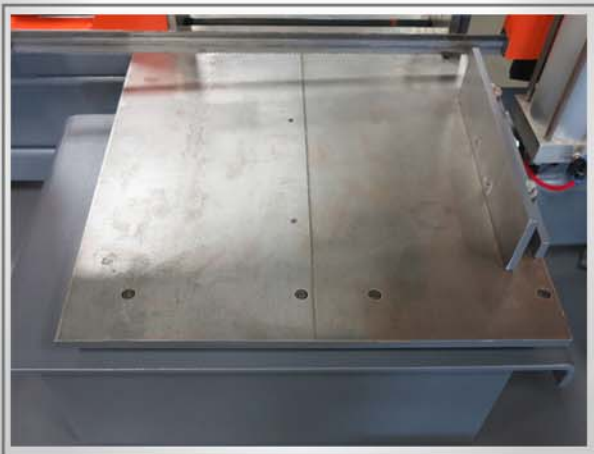
Optional Spray Mist Lubrication

The optional spray mist system lubricates the blade with a mist that is adjustable at a rate of 4 - 200 pulses per minute, pushing the mix of oil/air out of the delivery line to the nozzle.



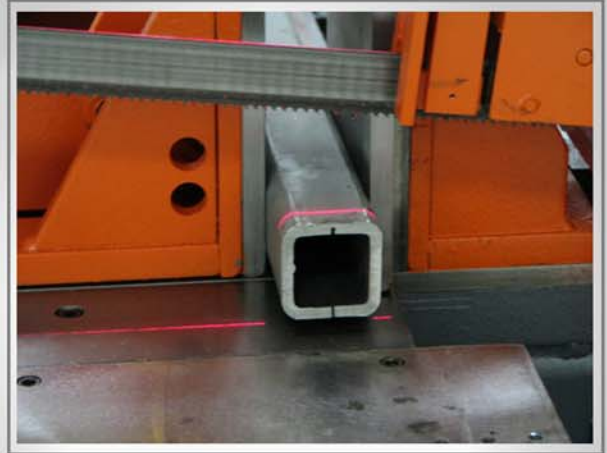
Full Width Discharge Plate

An Optional Full Width Discharge Plate can be added in lieu of the standard 18" exit support.



Optional Laser Light System

An Optional Laser Light indicates either above or below where the blade will enter the material for the cut.



Optional Air Powered Blade Tension

The optional air powered blade tensioner helps to keep the blade at the proper tension. It assures and maintains proper blade tension at all times during the cutting process.



Optional 5' or 10' Idle Roller Stock Table

5' or 10' optional idle roller tables with 12" centers are available for material handling. The tables are non-coolant panned and height adjustable to be "trued-in" with the saw. They are designed to move even the large bars with ease and accuracy.



Other Available Options: 24" Roller Load Table



**Band Saws • Material Handling • Metalworking Fluids
Custom Applications • Factory Service Department • Fast-Available Parts**

Proudly Made in the U.S.A. for Over 50 Years



HEM[®]SAW
—The saw that cuts straight.—

www.hemsaw.com

P.O. Box 1148, Pryor, OK 74362

Toll Free: (888) 729-7787 • Phone: (918) 825-4821

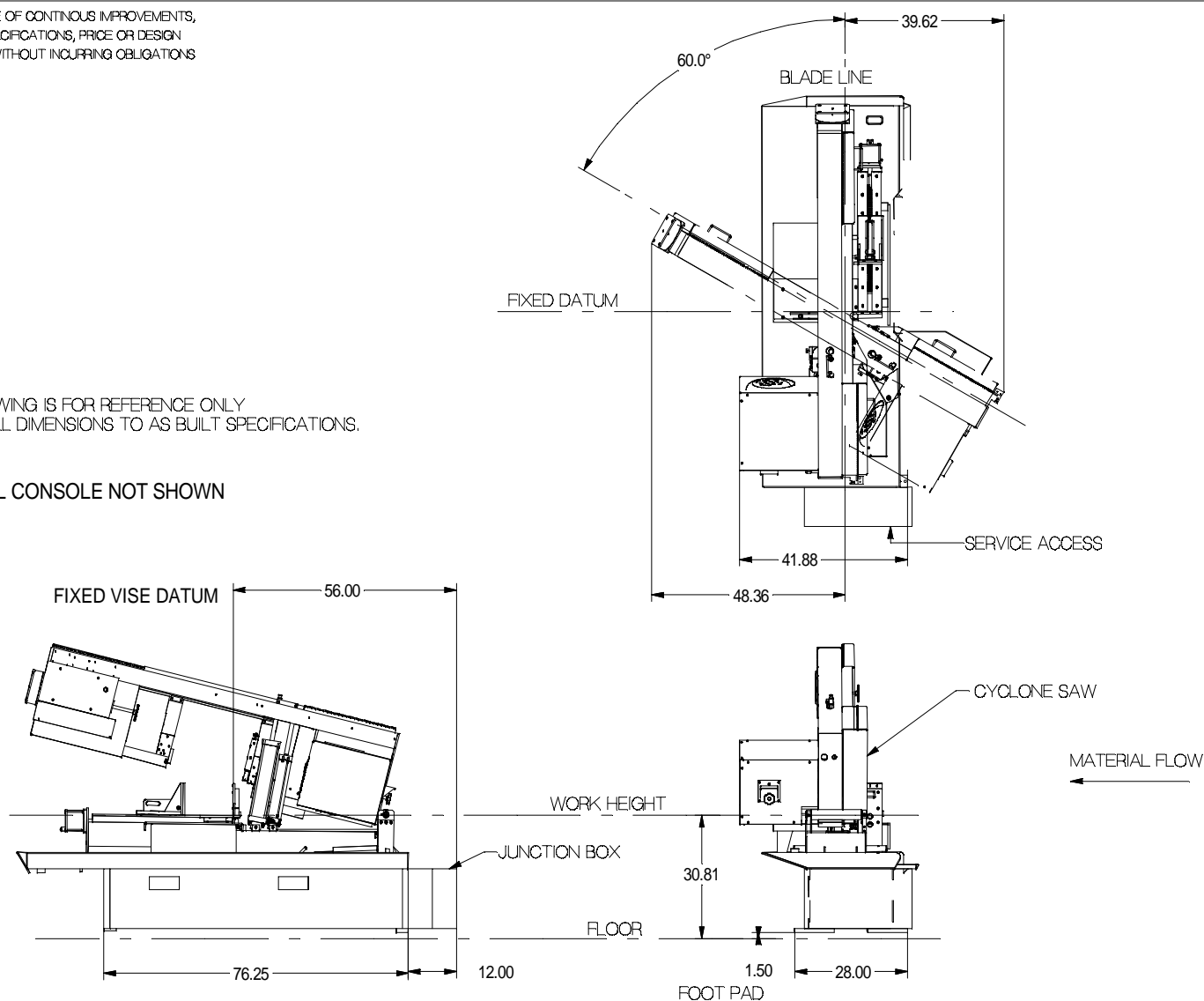
Fax: (918) 825-4824 • info@hemsaw.com

HEM, Inc., whose policy is one of continuous improvement, reserves the right to change the price, specifications, or design, as well as discontinue any model, at any time without notice and without incurring any obligations. Dimensions may vary. Please contact HEM, Inc. for a certified dimensional drawing of your specific model. Copyright 112800 HEM, Inc. All rights reserved.

NOTE: HEM INC. WHOSE POLICY IS ONE OF CONTINUOUS IMPROVEMENTS,
RESERVES THE RIGHT TO CHANGE SPECIFICATIONS, PRICE OR DESIGN
AT ANY TIME WITHOUT NOTICE AND WITHOUT INCURRING OBLIGATIONS
ALL DIMENSIONS +/- .100"

NOTE:
THIS DRAWING IS FOR REFERENCE ONLY
VERIFY ALL DIMENSIONS TO AS BUILT SPECIFICATIONS.

CONTROL CONSOLE NOT SHOWN



REV. B ADDED DIMENSIONS

2003 COPYRIGHT HEM Inc. All rights reserved. No part of this document may be copied without written permission.

HEM INC. MID-AMERICA INDUSTRIAL DISTRICT P.O. BOX 1148 PRYOR, OK 74361	
DATE 01/03	H0013297
CYCLONE LAYOUT	
B-006516-408	B